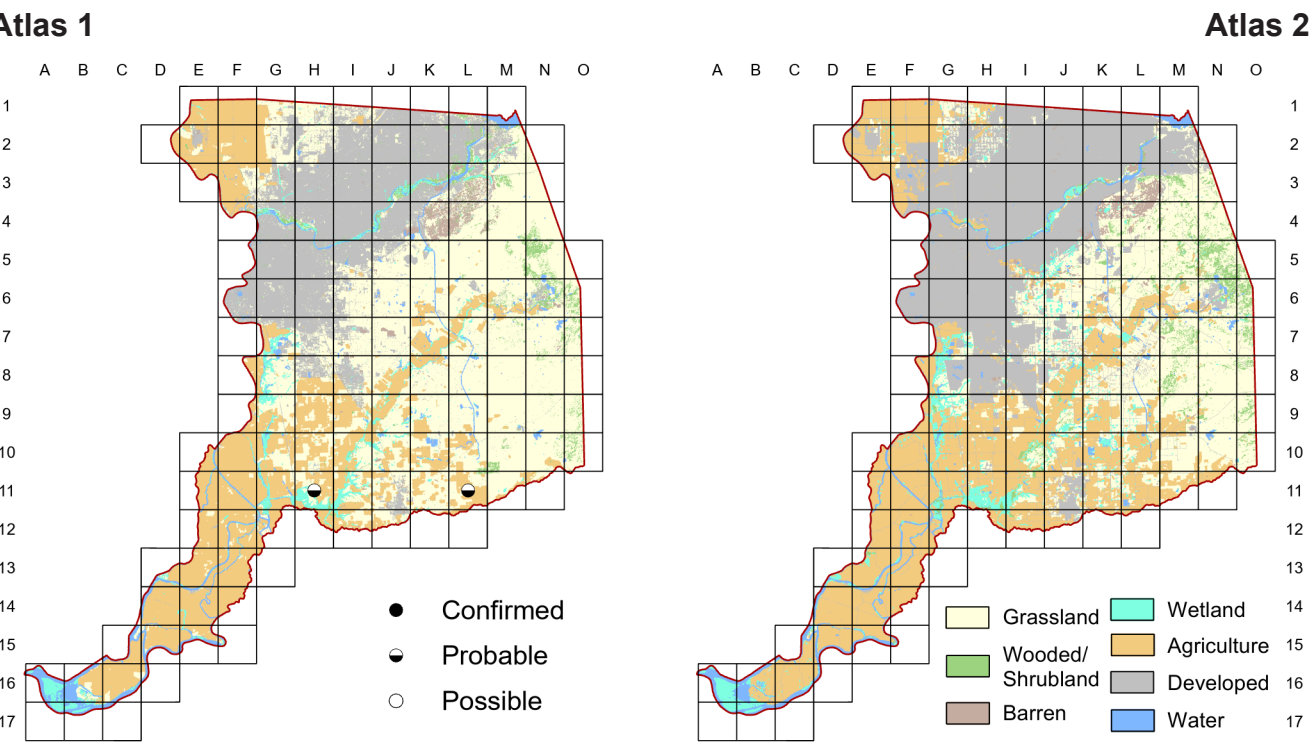


Wilson's Phalarope

Phalaropus tricolor



As noted in Chapter Four, Wilson’s Phalaropes have nested occasionally in nearby counties and, there are at least two confirmed records of breeding during the summer of 2001, between the two atlas periods. Therefore, we can hope that this beautiful and intriguing species may breed here again. As with Wilson’s Snipe, mosquito control issues make it difficult to maintain ideal habitat through the summer.

Breeding Bird Survey Trend (1966–2019)

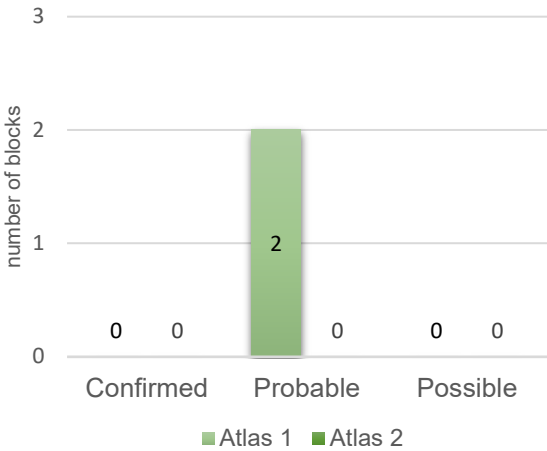
California	Rangewide ¹
–3.31% / year ^s	–0.58% / year ⁿ

¹North America; ^ssignificant, ⁿnonsignificant; Source: Sauer et al. 2020

Breeding Habitat

Shallow wetlands with nearby vegetation

Comparison of Atlas Results



Nest Type

Grass-lined depression in dense vegetation

1923

W. L. Dawson

These sturdy pioneers of feminism have assumed all the functions of leadership,...
and have delegated to the males all the domestic cares and responsibilities.