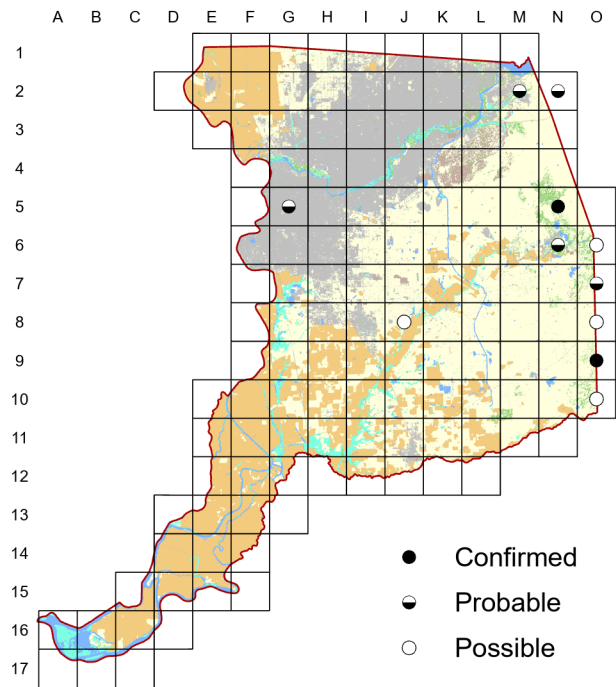
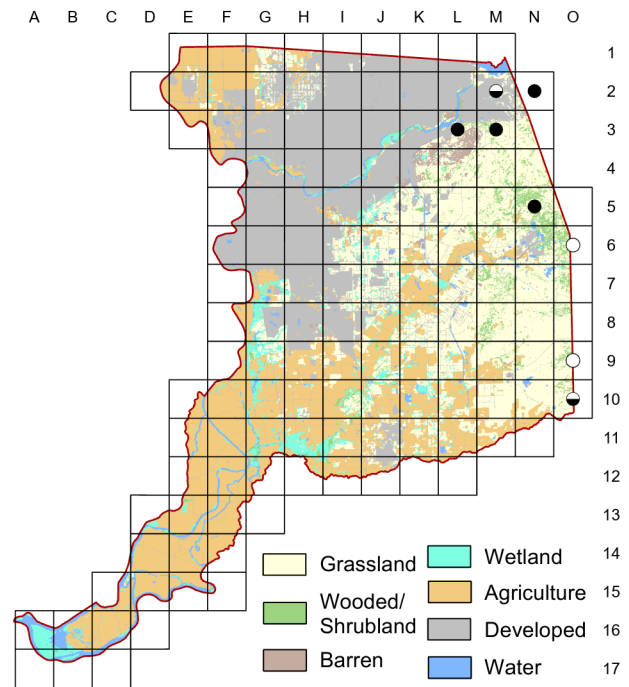


Violet-green Swallow *Tachycineta thalassina*

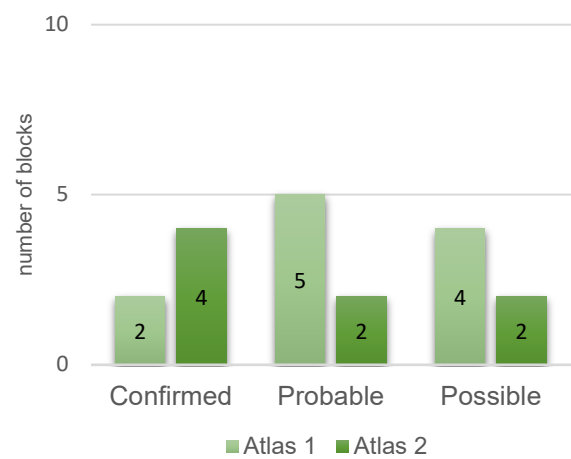
Atlas 1



Atlas 2



Comparison of Atlas Results



Although BBS trends suggest a species in decline, we saw no real change in breeding range for the Violet-green Swallow between the two atlases. In both, this species was mostly confined to the very eastern edge of the county, at the western edge of its Sierra breeding range.

Breeding Bird Survey Trend (1966–2019)

California	Rangewide ¹
-0.87% / year ^s	-0.56% / year ^s

¹North America; ^ssignificant; Source: Sauer et al. 2020

Breeding Habitat

Open woodland

Nest Type

Cavity in tree or nest box

1923

W. L. Dawson

The violet of the upper tail coverts and rump comes into view only in changing flashes; but one catches such visions as a beggar flung coins.