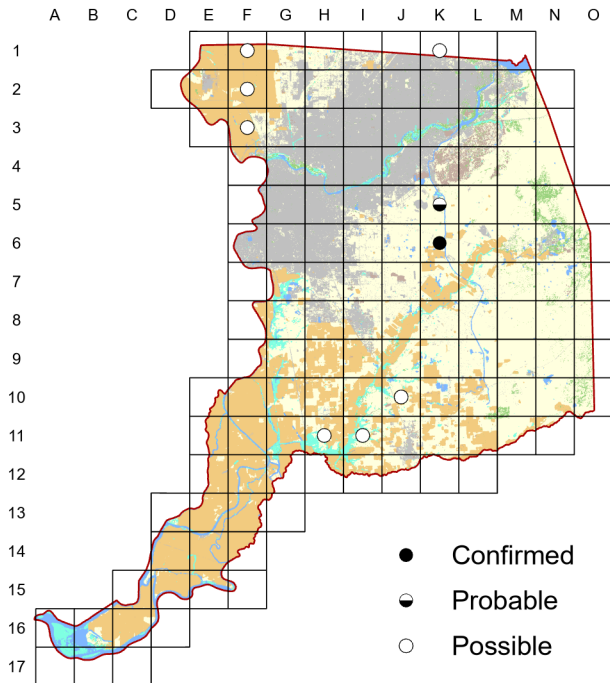
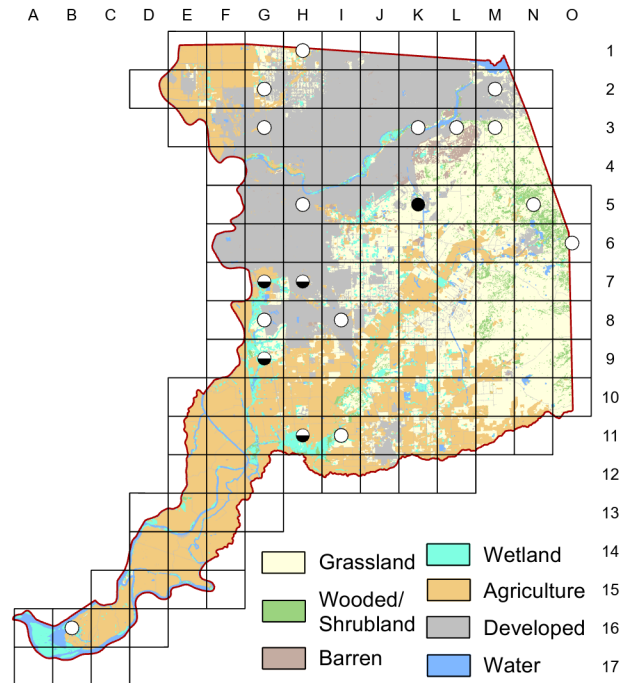


Sora *Porzana carolina*

Atlas 1



Atlas 2



Like the Virginia Rail, confirming breeding for the Sora is difficult. Unlike Virginia Rails, these birds don't "sing," so getting a block to probable status is even harder. Differences shown between the two atlases are likely a reflection of different methods. Soras are using wetlands set aside in developed areas like Folsom and Elk Grove. Status in the Delta with limited access is poorly known, but they likely occur where there is appropriate habitat.

Breeding Bird Survey Trend (1966–2019)

California
0.67% / yearⁿ

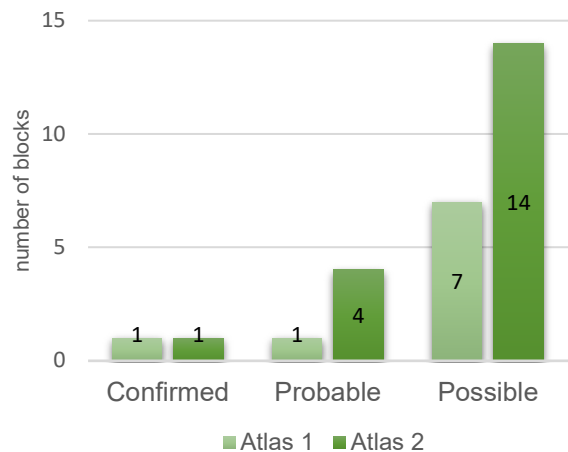
Rangewide¹
0.93% / yearⁿ

¹North America; ⁿnonsignificant; Source: Sauer et al. 2020

Breeding Habitat

Wetland with emergent vegetation

Comparison of Atlas Results



Nest Type

Loosely woven "basket"

21 August 2016

Block K-5

Observed for several minutes. Rail with short bill, still mostly dark; face mostly buffy; breast dull buffy; flanks with white streaks on a darker background color.