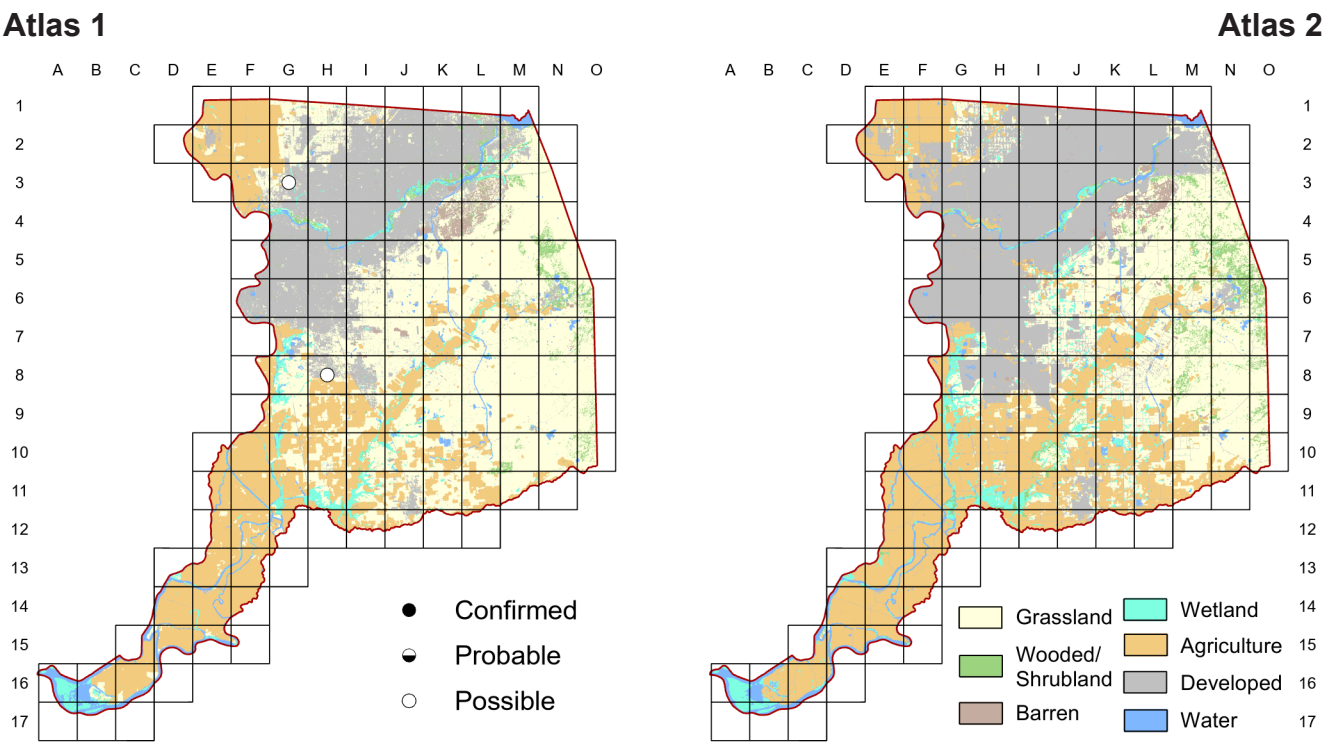


Short-eared Owl *Asio flammeus*



Short-eared Owls were reported as possible breeders in two blocks during Atlas 1, but both blocks have been converted almost entirely to suburbs since then. Breeding was confirmed on the Cosumnes River Preserve between atlases in 1999 (*fide* J. Trochet). Given statewide declines in recent decades, the possibility of Short-eared Owls breeding in the area in the future appears unlikely.

Breeding Bird Survey Trend (1966–2019)

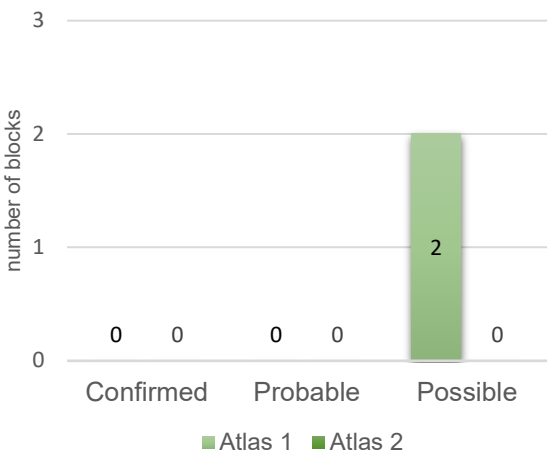
California	Rangewide ¹
–3.41% / year ^s	–1.68% / year ⁿ

¹North America; ^ssignificant, ⁿnonsignificant; Source: Sauer et al. 2020

Breeding Habitat

Open brush or grasslands

Comparison of Atlas Results



Nest Type

On ground in high grass, weeds, or brush

1940

I. Gabrielson and S. Jewett

For a nest it gathers together a nondescript mass of material on the ground and there lays its eggs.