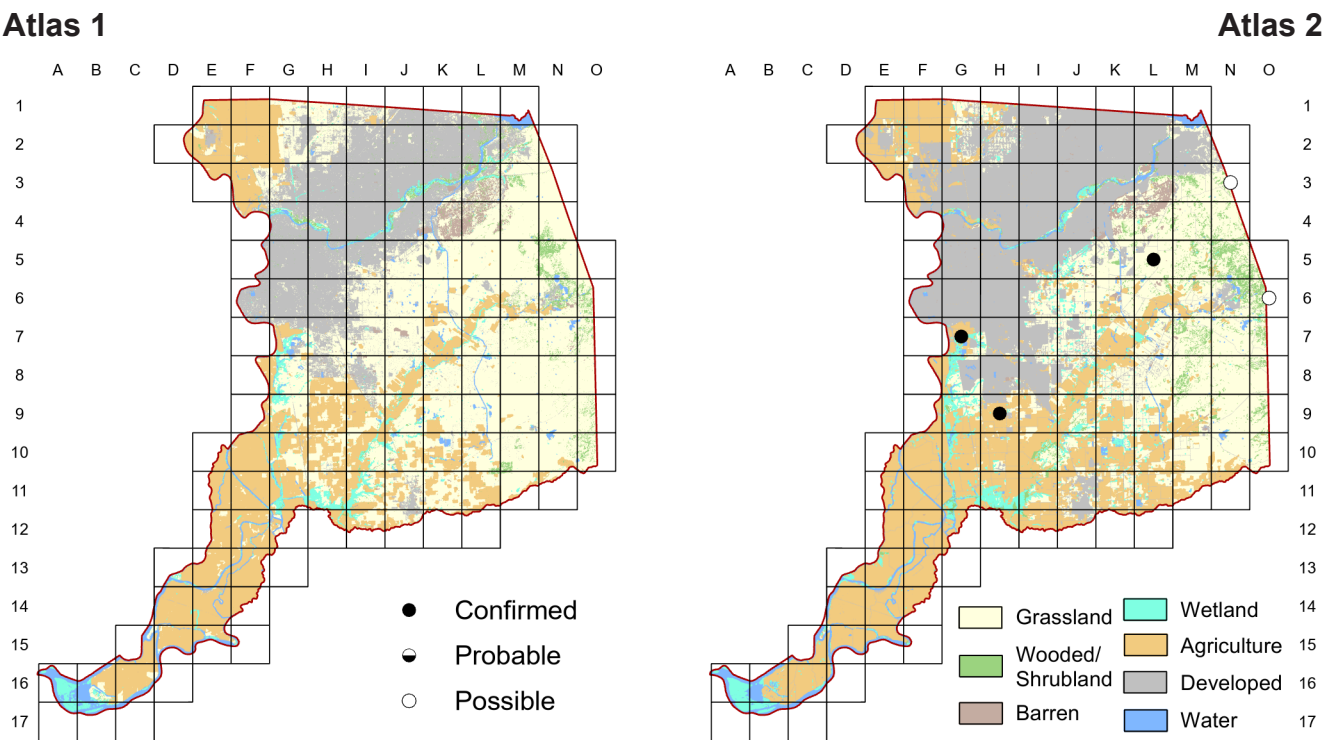
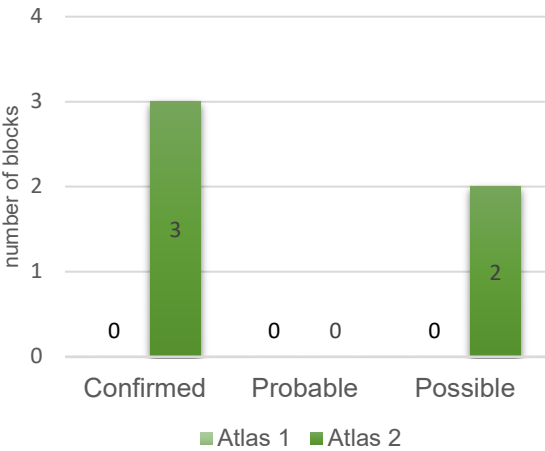


Say's Phoebe

Sayornis saya



Comparison of Atlas Results



As discussed in Chapter Four, the Say’s Phoebe seems to have very recently expanded its breeding range into the lower Sacramento Valley. Whether this handsome flycatcher will become a regular breeder is uncertain, but its affinity for human-altered habitats bodes well.

Breeding Bird Survey Trend (1966–2019)

California	Rangewide ¹
0.99% / year ⁿ	0.78% / year ^s

¹North America; ^ssignificant, ⁿnonsignificant; Source: Sauer et al. 2020

Breeding Habitat

Variety of open habitats

Nest Type

Cup nest on a sheltered ledge

17 May 2020

Block G-7

Surprised to see this all brown phoebe. Blackish tail, orange brown belly, potential breeding habitat. Juvenile just found after the adult.