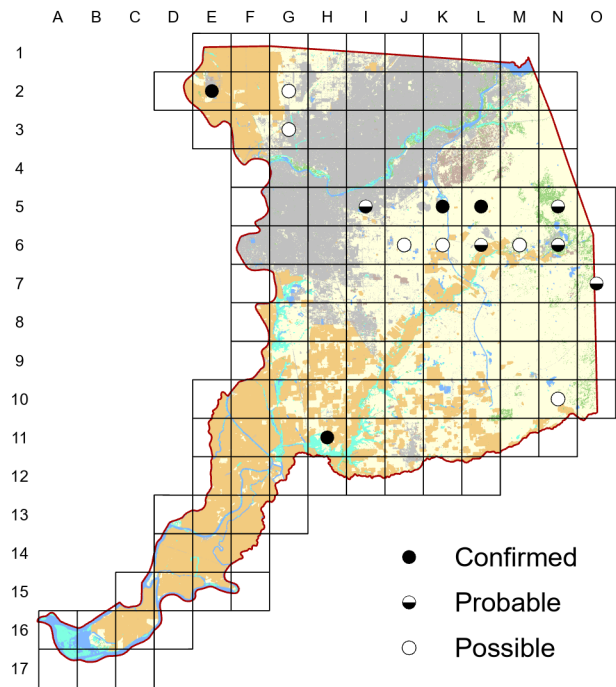
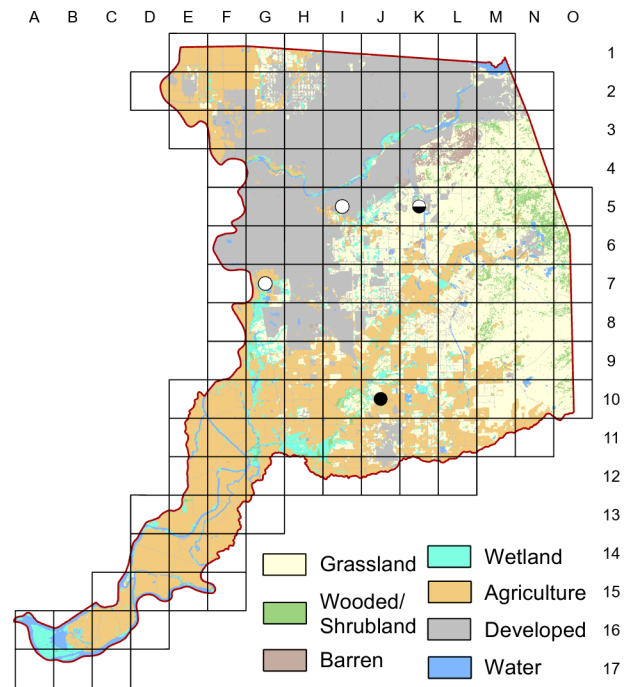


# Ruddy Duck *Oxyura jamaicensis*

Atlas 1



Atlas 2



Even by the early 20th century, California breeding populations of the Ruddy Duck had been severely reduced. Its breeding distribution in the Central Valley has been patchy and inconsistent for many years. The comparison of our results from these two atlases suggests a local decline, with breeding in Atlas 2 confirmed in only a single block.

### Breeding Bird Survey Trend (1966–2019)

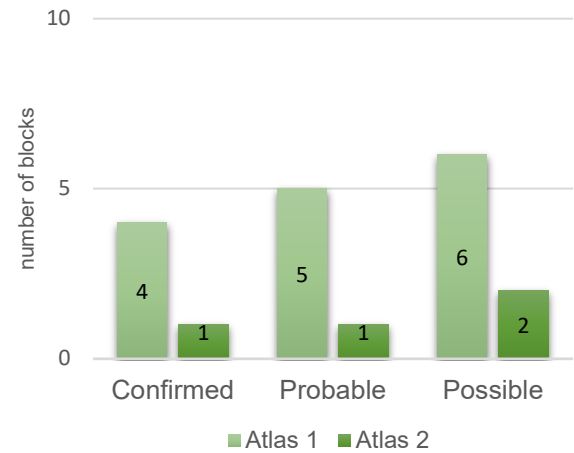
California	Rangewide <sup>1</sup>
–0.23% / year <sup>n</sup>	0.43% / year <sup>n</sup>

<sup>1</sup>North America; <sup>n</sup>nonsignificant; Source: Sauer et al. 2020

### Breeding Habitat

Wetlands/ponds

### Comparison of Atlas Results



### Nest Type

Floating platform in emergent vegetation

1923

W. L. Dawson

These birds are characterized by a certain jauntiness of bearing, quite in keeping with their bewitching chunkiness. They ride the water like corks, and their tails are most frequently cocked up.