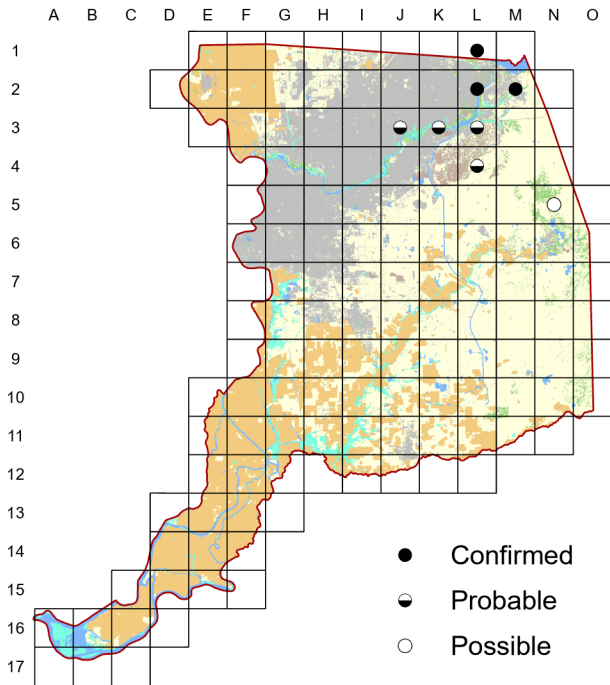
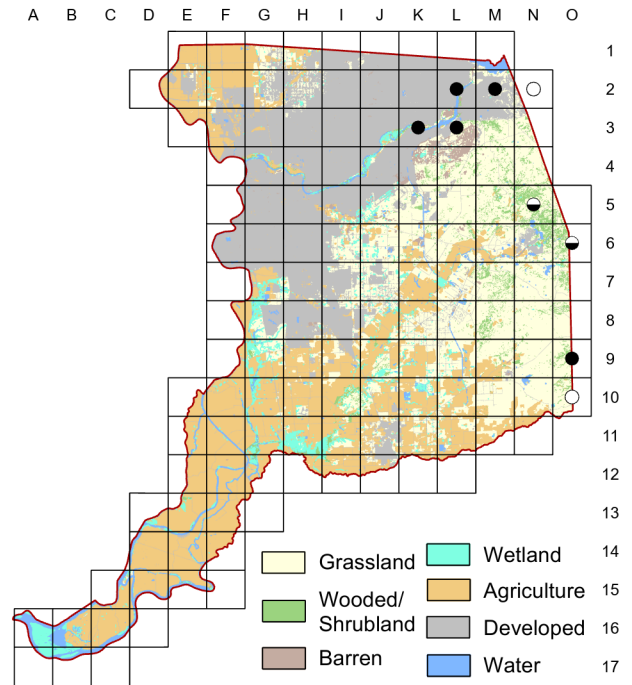


# Rufous-crowned Sparrow *Aimophila ruficeps*

Atlas 1



Atlas 2



Easily overlooked, the Rufous-crowned Sparrow can appear tame and approachable when found. This species, often seen in pairs year-round, is very rarely found away from breeding sites. This sparrow is restricted to the upper American River Parkway and the eastern part of the county, especially along rocky hillsides with shrubs or open oak woodland. There was no apparent change between the two atlases.

## Breeding Bird Survey Trend (1966–2019)

California  
1.81% / year<sup>s</sup>

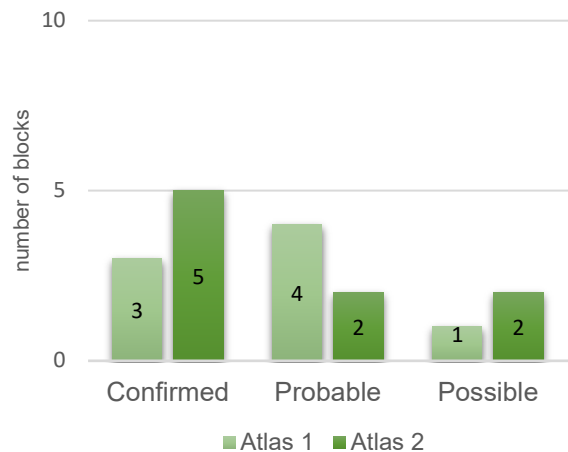
Rangewide<sup>1</sup>  
0.36% / year<sup>n</sup>

<sup>1</sup>North America; <sup>s</sup>significant, <sup>n</sup>nonsignificant; Source: Sauer et al. 2020

## Breeding Habitat

Often rocky hillsides with shrubs or open oaks

## Comparison of Atlas Results



## Nest Type

Loose cup nest, usually on the ground

16 July 2016

Block L-2

Singing from opposite bank. These seem to be harder to find here in the last couple of years. Drought?