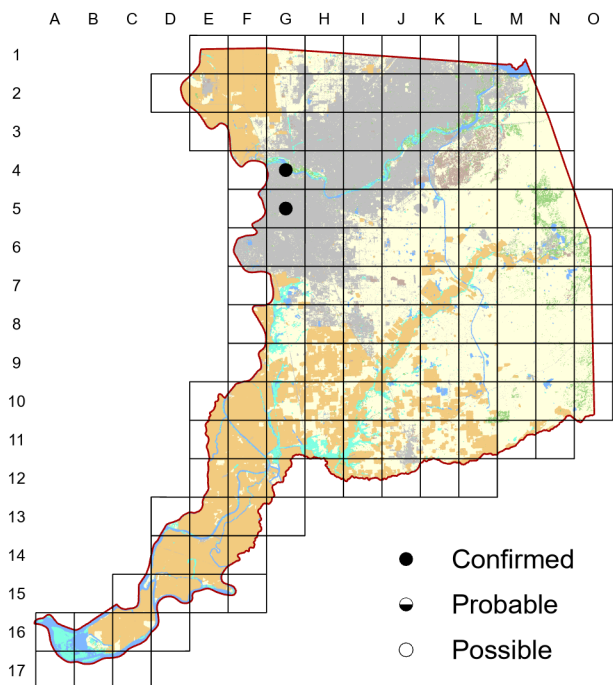
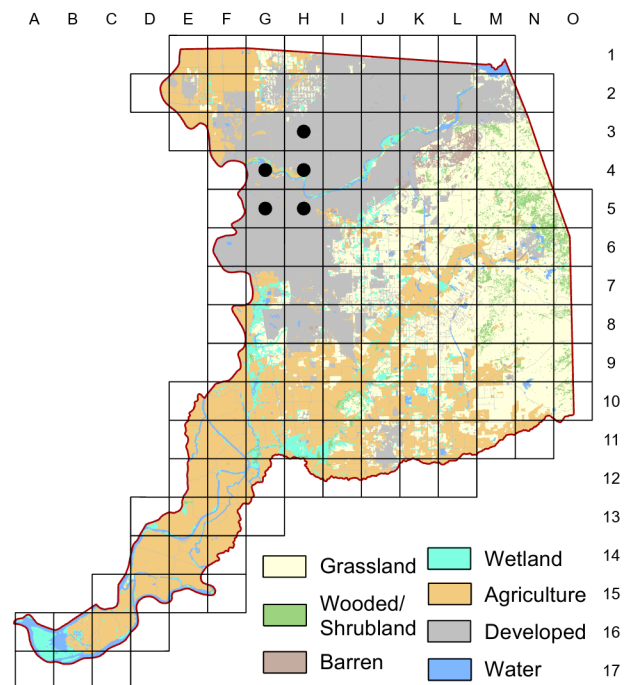


# Purple Martin *Progne subis*

Atlas 1



Atlas 2



Sacramento Purple Martin nesting is limited to cavities in bridges and overpasses. Recent declines are obscured in Atlas 2 because the intensive focus on the species elevates relative detections. Systematic monitoring began in 2002, and martin numbers peaked in 2004, then declined by 88% to just 21 pairs by 2019, possibly due to local disturbance and, especially, increased use of neonicotinoid insecticides (Airola 2020).

## Breeding Bird Survey Trend (1966–2019)

California  
1.2% / year<sup>n</sup>

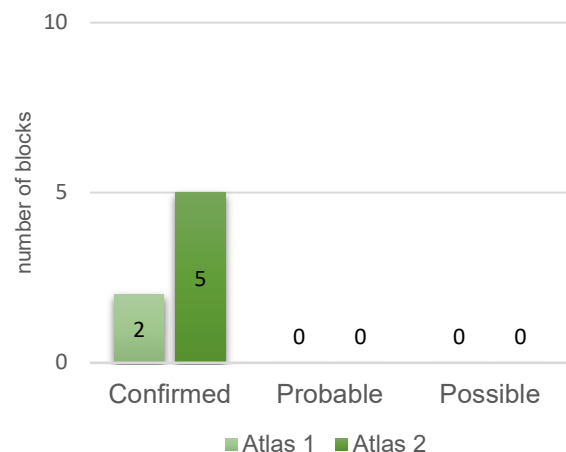
Rangewide<sup>1</sup>  
-0.54% / year<sup>s</sup>

<sup>1</sup>North America; <sup>s</sup>significant, <sup>n</sup>nonsignificant; Source: Sauer et al. 2020

## Breeding Habitat

Variety of open or semi-open sites

## Comparison of Atlas Results



## Nest Type

Cavity in tree or human-made structures

24 June 2016

Block H-5

Saw a lot of them foraging low along the railroad right of way south of the colony;  
lots of dragonflies.