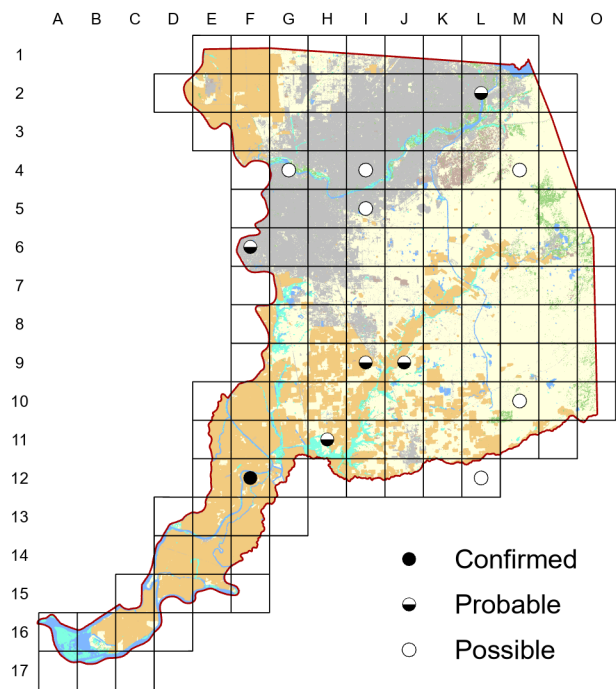


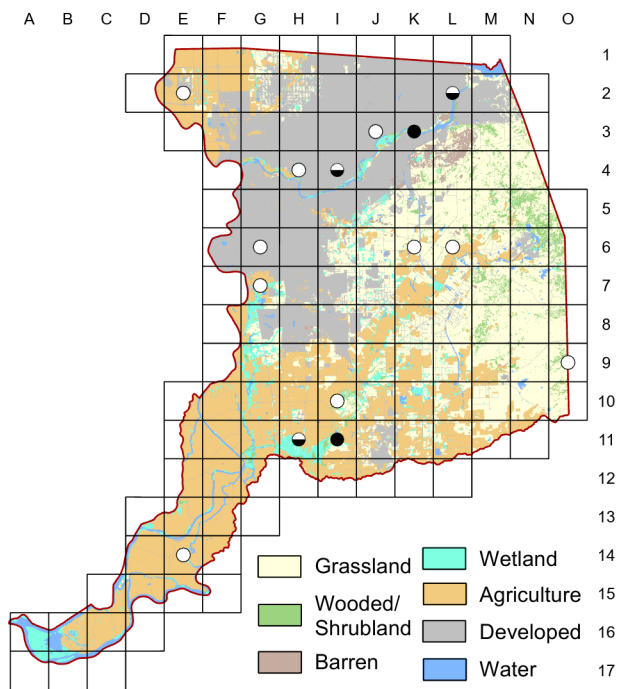
Pacific-slope Flycatcher

Empidonax difficilis

Atlas 1



Atlas 2



The Pacific-slope Flycatcher is one of those species that atlasers must be cautious about reporting as potential breeders. While most birds breed in dense, moist montane or coastal riparian habitats, a few do breed in similar Central Valley sites. However, pass-through spring migrants may also sing and exhibit some breeding behaviors in these valley locations. Comparison of the results of the two atlases suggests little change in status has occurred.

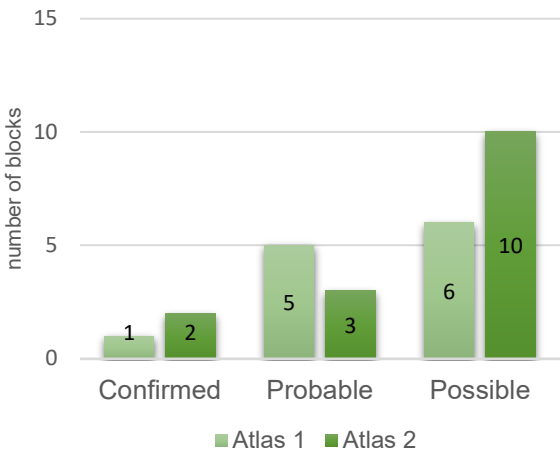
Breeding Bird Survey Trend (1966–2019)

California Rangewide¹
-0.68% / year^s -0.17% / yearⁿ

¹North America; ^ssignificant, ⁿnonsignificant; Source: Sauer et al. 2020

Breeding Habitat
Riparian woodlands

Comparison of Atlas Results



Nest Type
Cup nest, usually in sheltered site

29 May 2020 Block I-4
Adult was seen with two fledglings in tow. I highly suspected they were breeding somewhere near my yard this year, and now it's been confirmed.