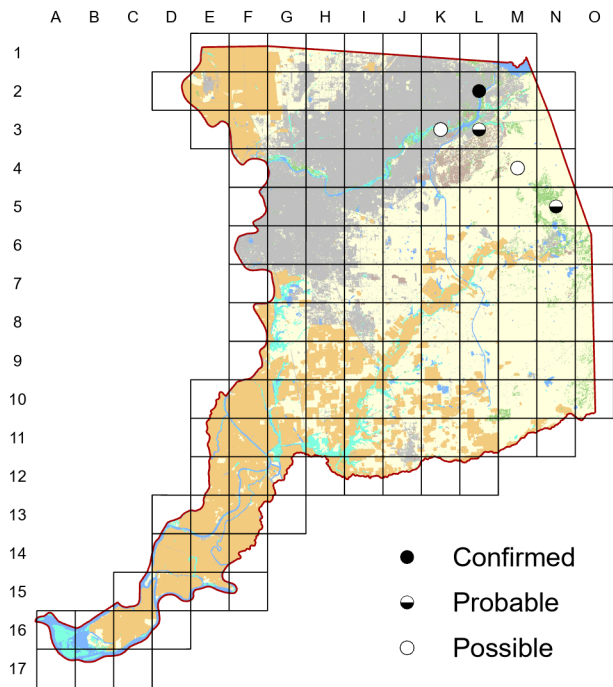


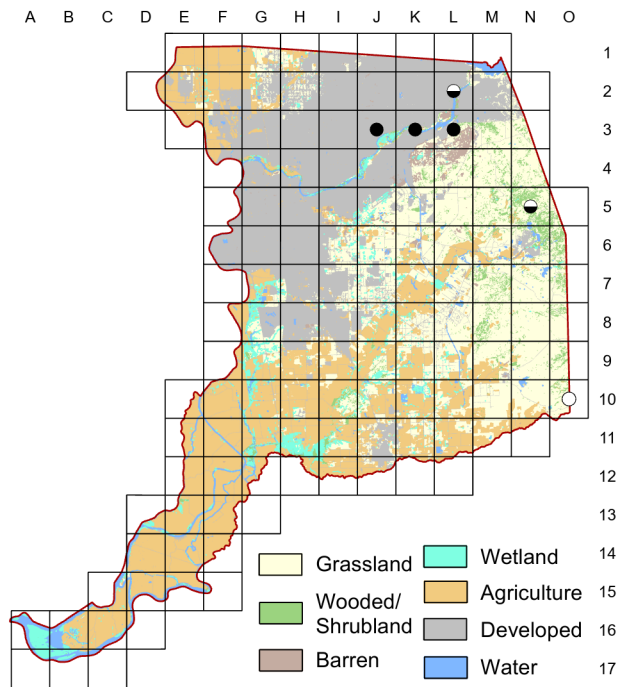
# Phainopepla

## *Phainopepla nitens*

Atlas 1



Atlas 2



The breeding status of the Phainopepla in California is somewhat mysterious. While most breed early in the year in desert washes in the southeastern corner of the state, small numbers breed later in the foothills and Central Valley edges. Whether this represents a second nesting by desert breeders, or a different breeding population remains uncertain. Our results suggest little change in their Sacramento County breeding distribution between the atlases.

### Breeding Bird Survey Trend (1966–2019)

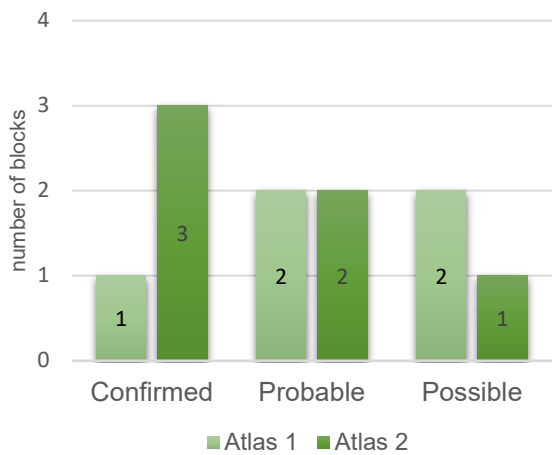
California	Rangewide <sup>1</sup>
1.52% / year <sup>s</sup>	1.23% / year <sup>n</sup>

<sup>1</sup>North America; <sup>s</sup>significant, <sup>n</sup>nonsignificant; Source: Sauer et al. 2020

### Breeding Habitat

Desert washes and oak savanna

### Comparison of Atlas Results



### Nest Type

Cup nest, often within a mistletoe clump

29 June 1989

Block L-2

Observed female and later saw male holding tight in oak tree tops.  
Male finally led us to the nest.