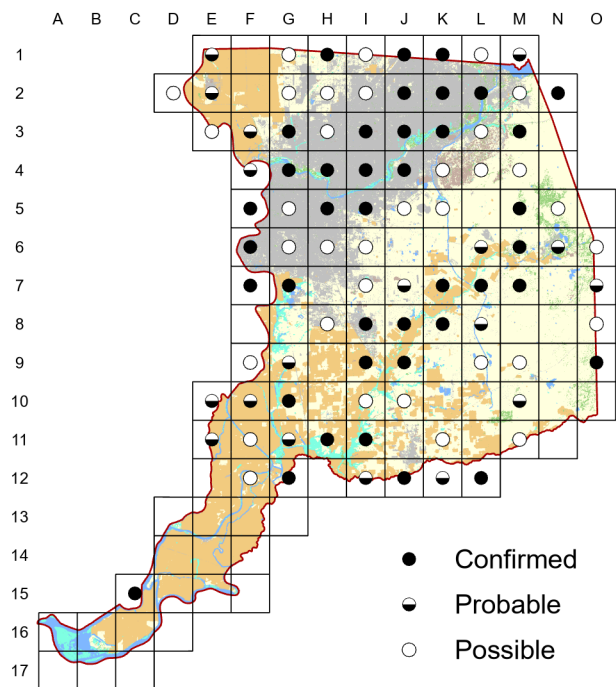
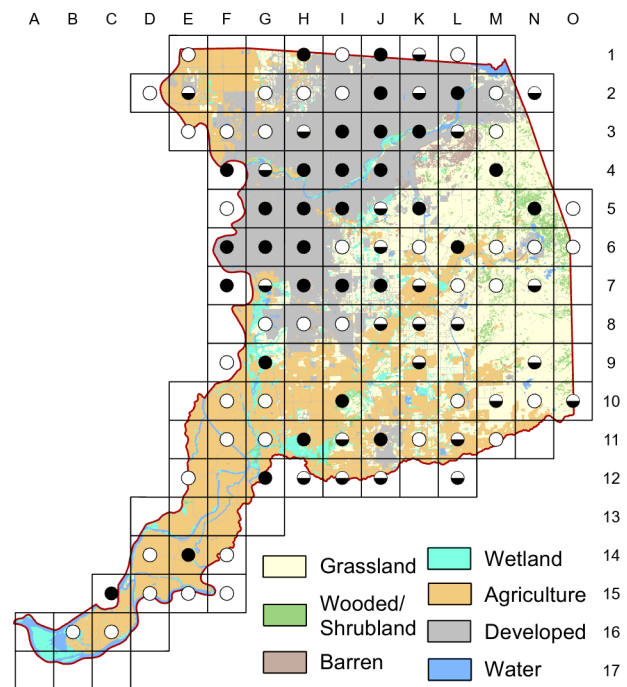


# Nuttall's Woodpecker *Dryobates nuttallii*

Atlas 1



Atlas 2



There was essentially no change in the breeding status of the Nuttall's Woodpecker in the county between the two atlases. This highly adaptable woodpecker is able to breed anywhere it can find or make a suitable cavity, from oak savanna to urban neighborhoods. A near endemic to California, this species showed significant positive trends from BBS data.

## Breeding Bird Survey Trend (1966–2019)

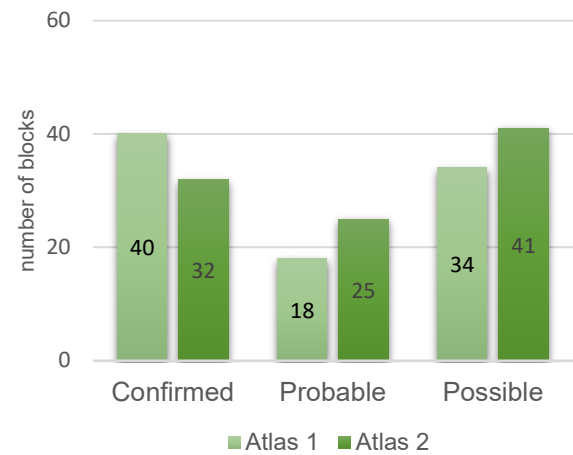
California	Rangewide <sup>1</sup>
<b>0.78% / year<sup>s</sup></b>	<b>0.78% / year<sup>s</sup></b>

<sup>1</sup>North America; <sup>s</sup>significant; Source: Sauer et al. 2020

## Breeding Habitat

Variety of wooded habitats

## Comparison of Atlas Results



## Nest Type

Cavity

1923

W. L. Dawson

The Nuttall Woodpecker, as a good friend in the Cooper Club declares, always has a grouch on, and you are sure to be challenged as you pass.