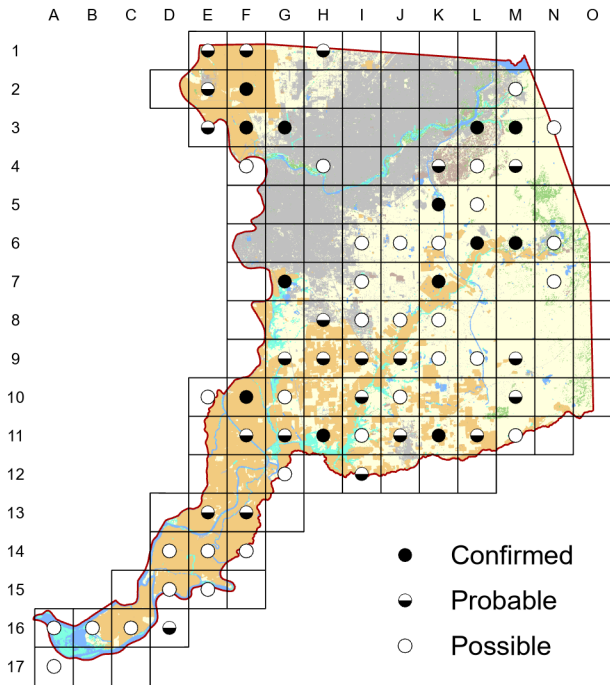
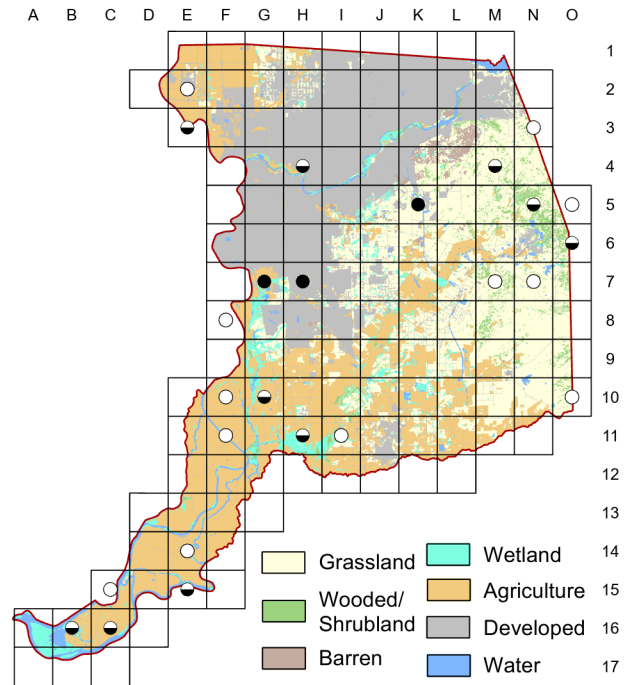


# Northern Harrier *Circus hudsonius*

**Atlas 1**



**Atlas 2**



Consistent with trends in California and rangewide, our comparison of the breeding distribution for the Northern Harrier shows a dramatic reduction between atlases (discussed in Chapter Six). Continued expansion of orchards, vineyards, and development into open country leaves scant hope for a local recovery.

## Breeding Bird Survey Trend (1966–2019)

California  
–1.68% / year<sup>s</sup>

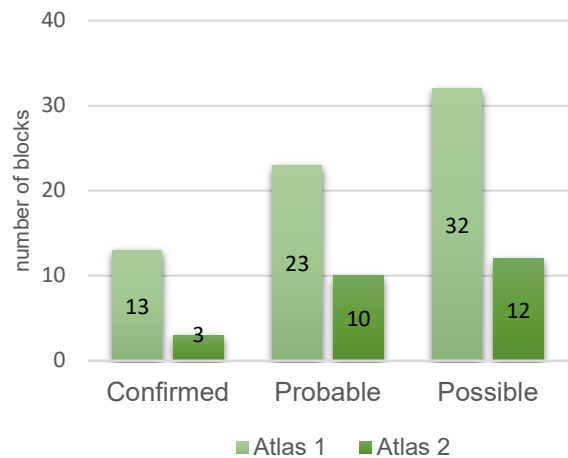
Rangewide<sup>1</sup>  
–0.79% / year<sup>s</sup>

<sup>1</sup>North America; <sup>s</sup>significant; Source: Sauer et al. 2020

## Breeding Habitat

Open country, usually with wetlands

## Comparison of Atlas Results



## Nest Type

Stick nest on ground in thick vegetation

20 March 2017

Block K-5

One carrying nesting material flew down in the swampy patch on the other side of the golf course fence.