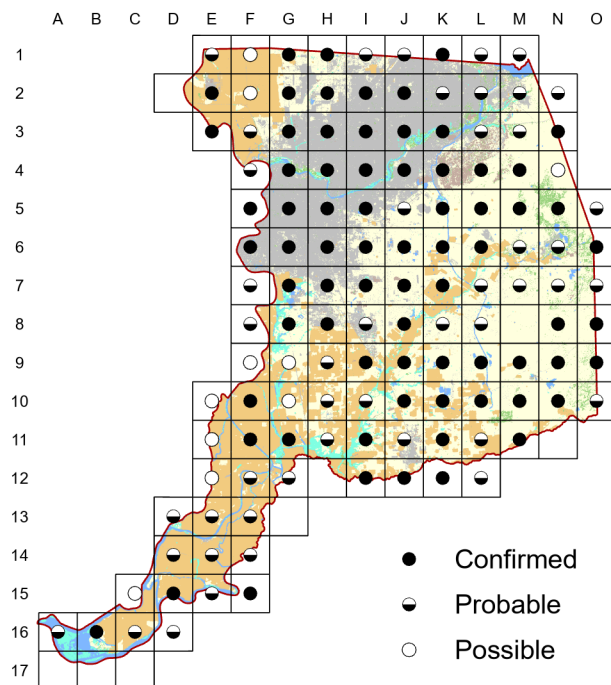


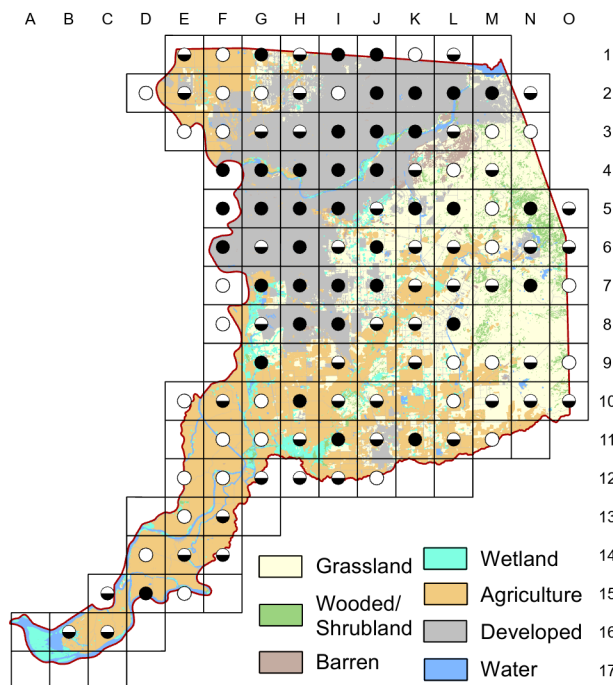
Mourning Dove

Zenaida macroura

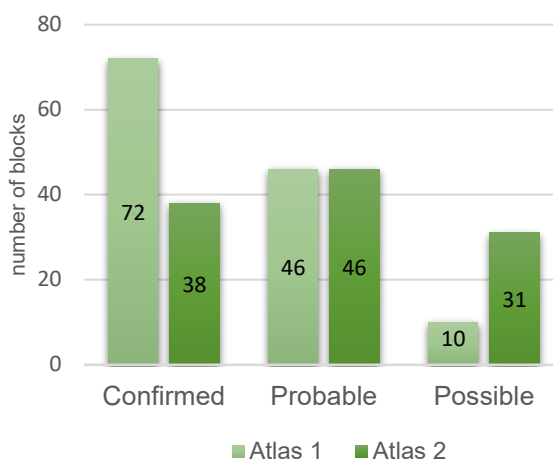
Atlas 1



Atlas 2



Comparison of Atlas Results



In contrast to the significant long-term declines reflected in BBS data, our results show little, if any, real change in the breeding distribution of the Mourning Dove. They seem equally at home in nearly any local habitat and, as yet, show no ill effects from the arrival of Eurasian Collared-Doves to the county.

Breeding Bird Survey Trend (1966–2019)

California Rangewide¹
-1.14% / year^s **-0.42% / year^s**

¹North America; ^ssignificant; Source: Sauer et al. 2020

Breeding Habitat

Wide variety from open to woodland to urban areas

Nest Type

Cup nest in tree, shrub, or ledge

18 June 2016

Block #5

Two young in nest under eaves above kitchen window; third nest of year here.