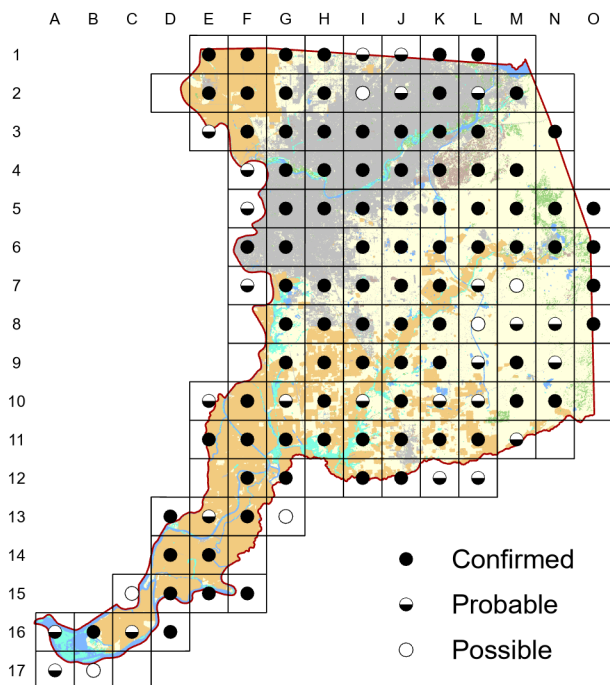
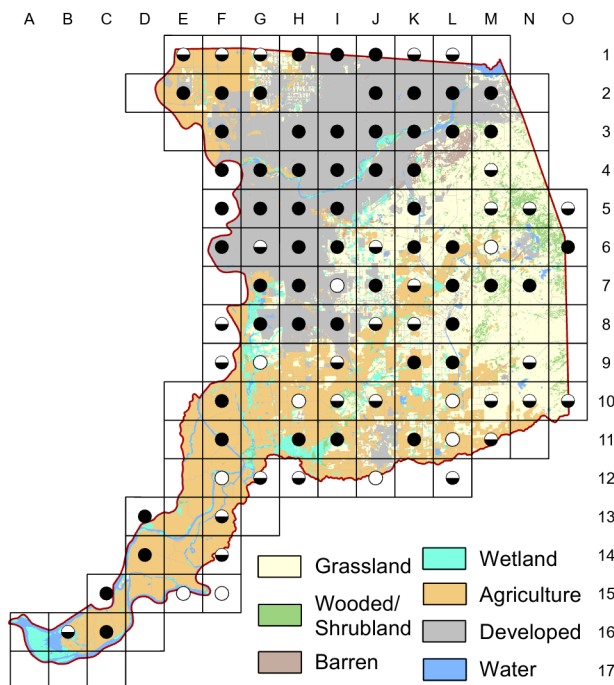


Mallard *Anas platyrhynchos*

Atlas 1



Atlas 2



Truly wild Mallards have recently experienced large declines in breeding population in the Central Valley. This decline may be ameliorated in Sacramento County due to the species' adaptability to urban habitats and human disturbance and mixing with feral stock.

Breeding Bird Survey Trend (1966–2019)

California
1.26% / year^s

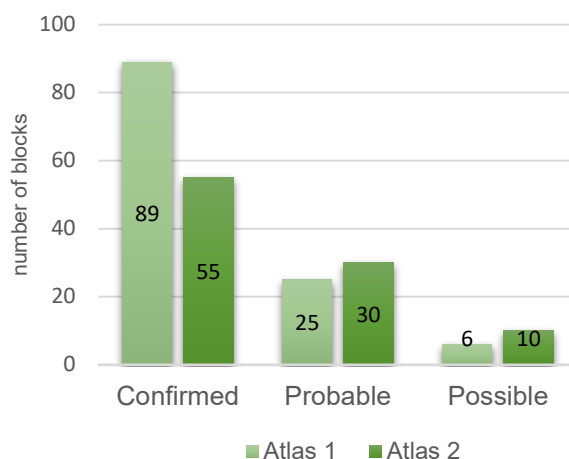
Rangewide¹
0.11% / yearⁿ

¹North America; ^ssignificant, ⁿnonsignificant; Source: Sauer et al. 2020

Breeding Habitat

Variety of ponds/wetlands

Comparison of Atlas Results



Nest Type

Concealed scrape on ground with plant matter

28 April 2019

Block H-7

There were four families with young, 11, 6, 12, 8; all different ages, from new to almost adult but still following after parents.