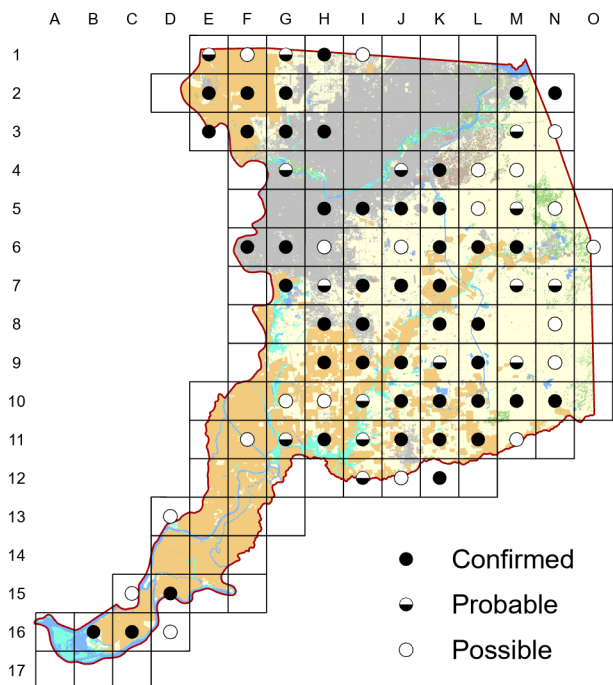
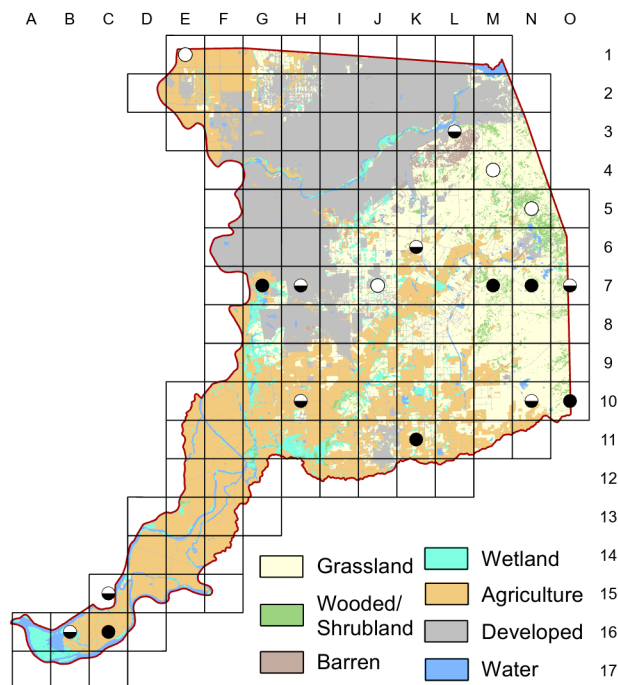


# Loggerhead Shrike *Lanius ludovicianus*

**Atlas 1**



**Atlas 2**



Our comparisons of these two atlases includes no more striking (and alarming) example of decline than that of the Loggerhead Shrike. As noted in Chapter Six, our local results reflect rangewide trends. Habitat loss, West Nile virus, cowbirds, and possible environmental contaminants may all be playing a role in the demise of this fearless and handsome bird. More than one Atlas 2 participant described full days in suitable habitat without a single shrike.

## Breeding Bird Survey Trend (1966–2019)

California  
-2.73% / year<sup>s</sup>

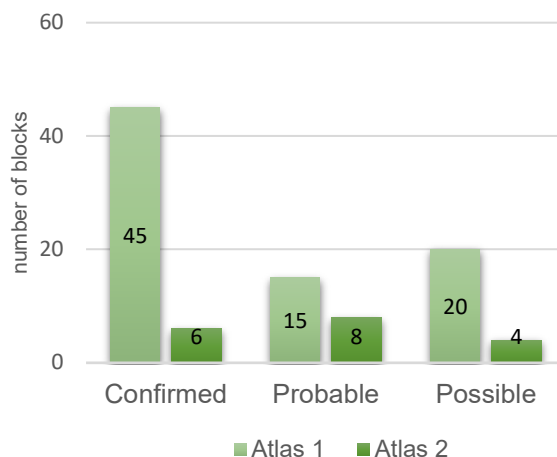
Rangewide<sup>1</sup>  
-2.56% / year<sup>s</sup>

<sup>1</sup>North America; <sup>s</sup>significant; Source: Sauer et al. 2020

## Breeding Habitat

Variety of open habitats with shrubs or trees

## Comparison of Atlas Results



## Nest Type

Cup nest, concealed in shrub or tree

29 May 2018

Block G-7

Saw one recently fledged bird being fed by adult.