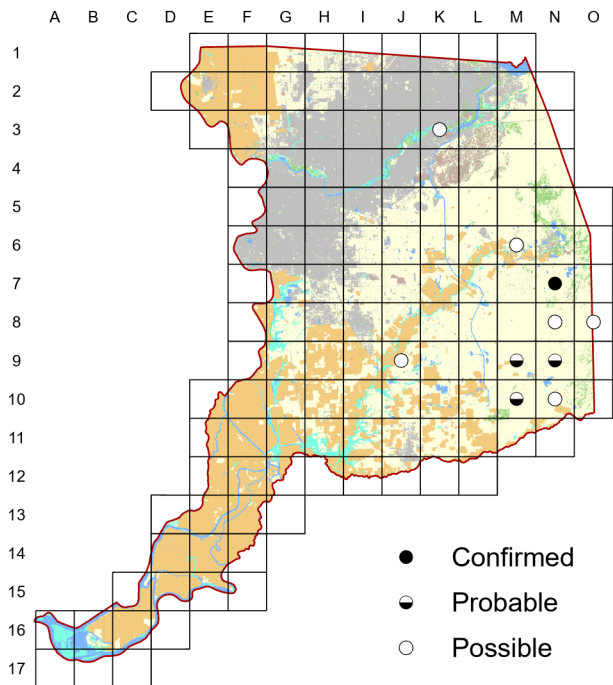
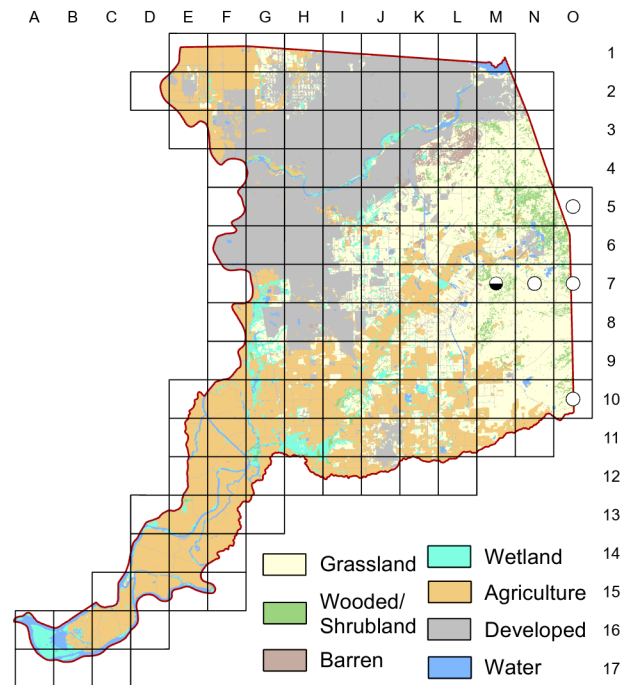


Lesser Nighthawk *Chordeiles acutipennis*

Atlas 1



Atlas 2



As discussed in Chapter Four, the Lesser Nighthawk has seen most of its historical Central Valley breeding habitats disappear over the past century. With only a single confirmation during Atlas 1, and a handful of breeding season observations in Atlas 2, the current breeding status of this nighthawk in the county is best described as hypothetical. However, it is possible there is some occupied breeding habitat in the southeastern corner inaccessible to atlasers.

Breeding Bird Survey Trend (1966–2019)

California
0.01% / yearⁿ

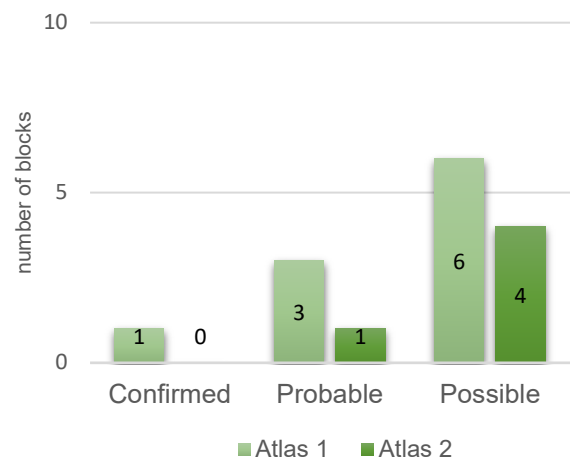
Rangewide¹
0.15% / yearⁿ

¹North America; ⁿnonsignificant; Source: Sauer et al. 2020

Breeding Habitat

Sparsely-vegetated, open country

Comparison of Atlas Results



Nest Type

Eggs laid directly on gravelly, pebbly ground

13 May 2017

Block O-7

Foraging over pond.