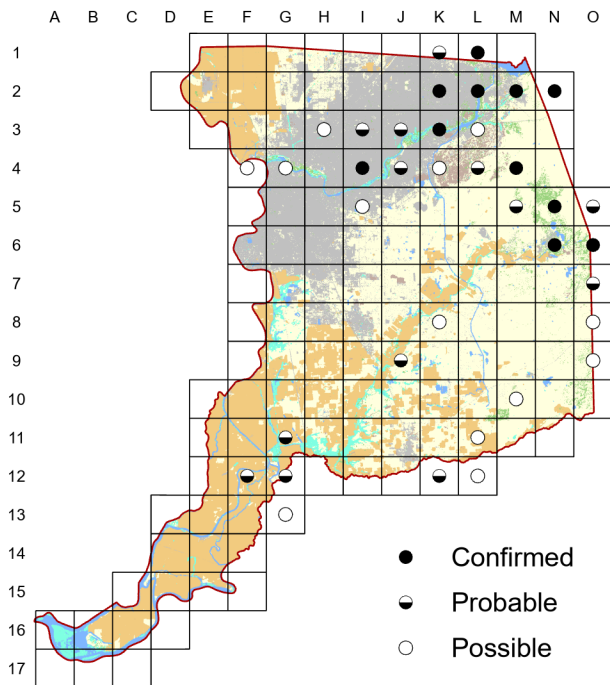
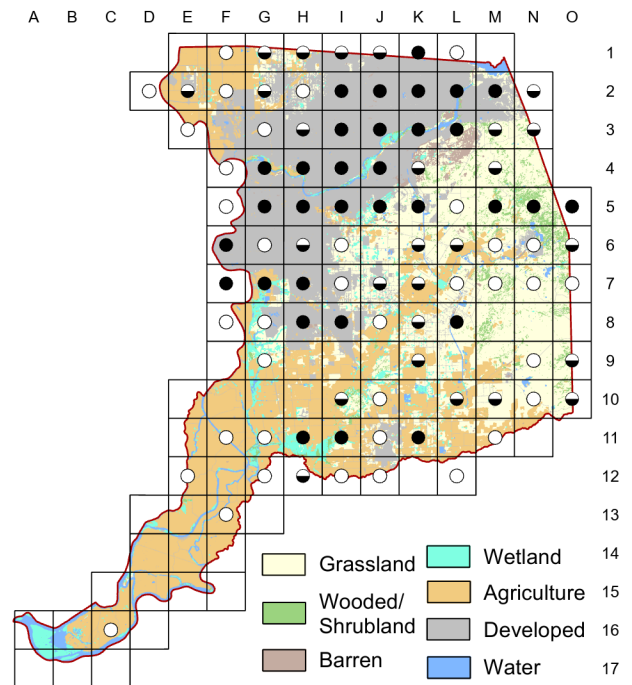


# Lesser Goldfinch *Spinus psaltria*

**Atlas 1**



**Atlas 2**



The remarkable, and largely unexpected, expansion of the Lesser Goldfinch breeding range between the two atlases is discussed in more detail in Chapter Five. The fact that this expansion is mainly into urbanized areas suggests a recent local adaptation to these sorts of habitats.

## Breeding Bird Survey Trend (1966–2019)

California  
0.08% / year<sup>n</sup>

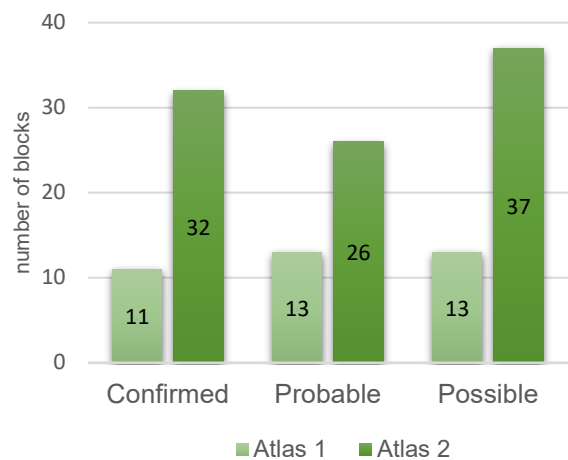
Rangewide<sup>1</sup>  
0.12% / year<sup>n</sup>

<sup>1</sup>North America; <sup>n</sup>nonsignificant; Source: Sauer et al. 2020

## Breeding Habitat

Wide variety; always with some trees or shrubs

## Comparison of Atlas Results



## Nest Type

Cup nest placed in dense cover in a tree or shrub

23 April 2016

Block L-3

These flew to a particular tree near the sidewalk around the parking lot so often I got curious and discovered a nest they were visiting. It sounded like they were feeding babies.