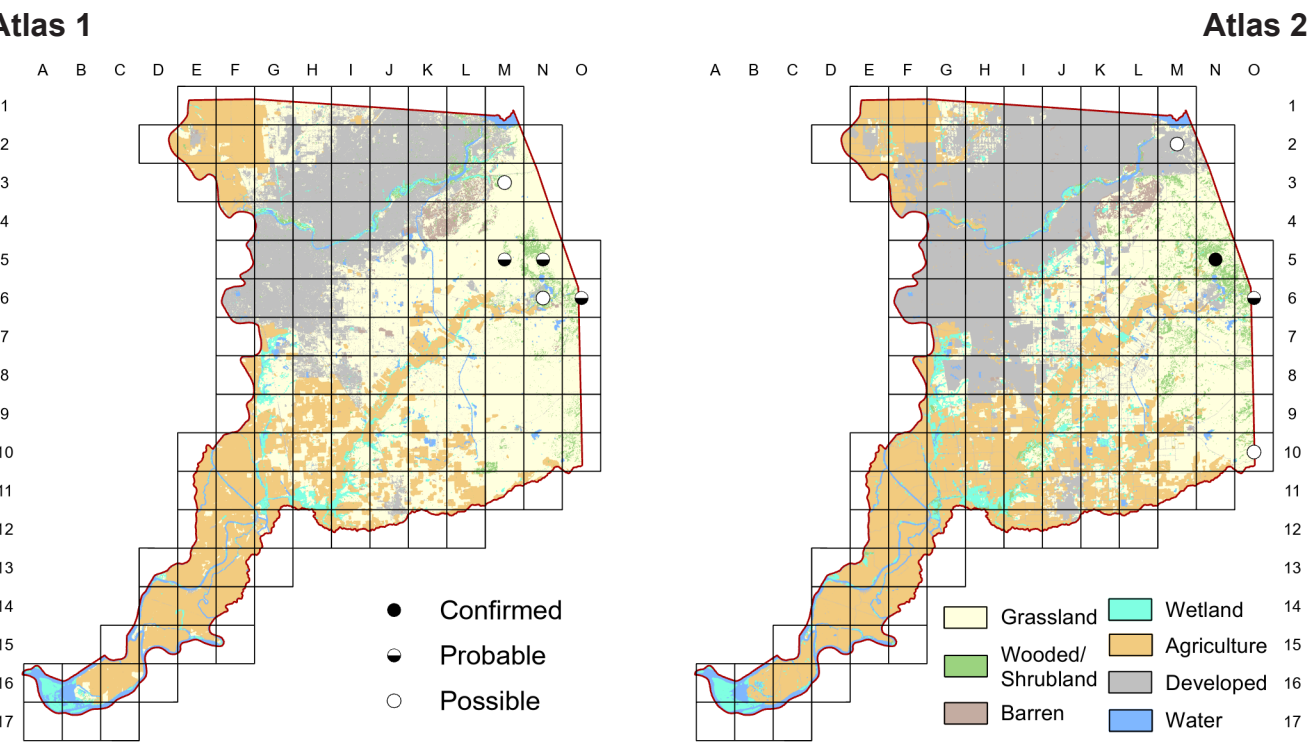


Lawrence’s Goldfinch

*Spinus lawrencei*



As discussed in Chapter Four, changes in the distribution of the Lawrence’s Goldfinch are difficult to evaluate. Distribution was similar between the two atlases, with breeding behaviors observed in the eastern portion of the county where oak woodland habitat occurs, including a confirmation in the Deer Creek Hills Preserve within block N-5 during Atlas 2.

Breeding Bird Survey Trend (1966–2019)

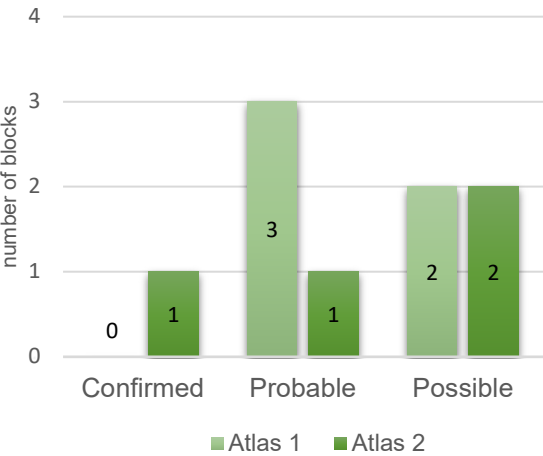
California	Rangewide <sup>1</sup>
0.08% / year <sup>n</sup>	–0.52% / year <sup>n</sup>

<sup>1</sup>North America; <sup>n</sup>nonsignificant; Source: Sauer et al. 2020

Breeding Habitat

Open woodland, usually near water

Comparison of Atlas Results



Nest Type

Cup nest

13 April 2018

Block N-5

The female of a pair was observed picking up and flying away with a very long blade of grass.