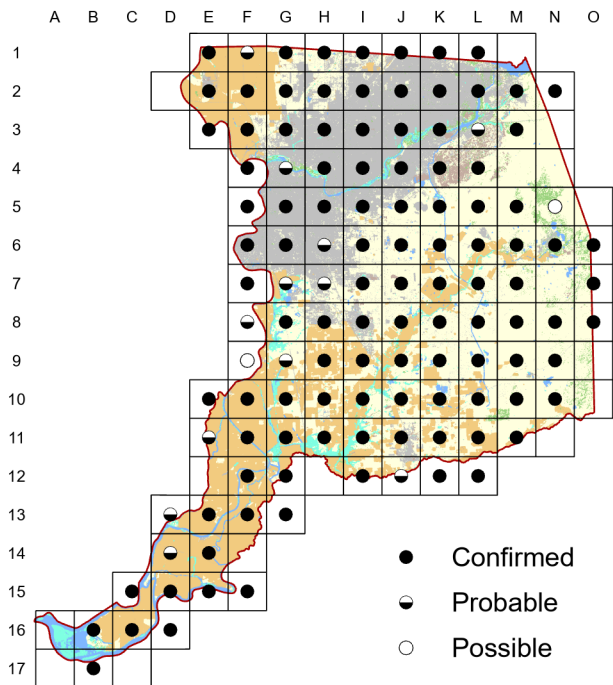
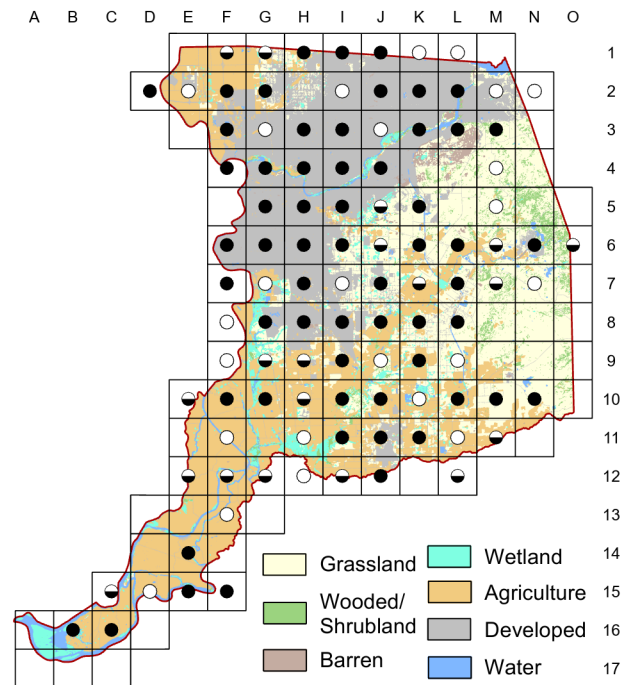


House Sparrow *Passer domesticus*

Atlas 1



Atlas 2



As noted in Chapter Four (where we cover a trio of long-tenured introduced birds), differences in methodology between the two atlases make it difficult to draw solid conclusions about the House Sparrow's status in the county. However, the apparent decline would be consistent with regional and rangewide trends.

Breeding Bird Survey Trend (1966–2019)

California
–1.9% / year^s

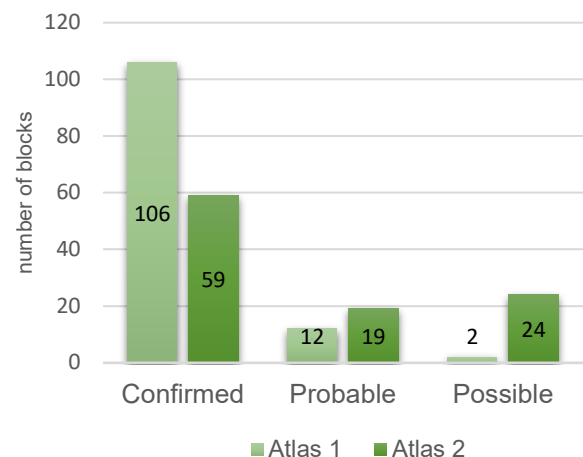
Rangewide¹
–2.95% / year^s

¹North America; ^ssignificant; Source: Sauer et al. 2020

Breeding Habitat

Variety, usually in human-modified habitats

Comparison of Atlas Results



Nest Type

Cavity

31 March 2017

Block L-8

A House Sparrow has taken over one of the bluebird/swallow nest boxes.
Five eggs in nest.