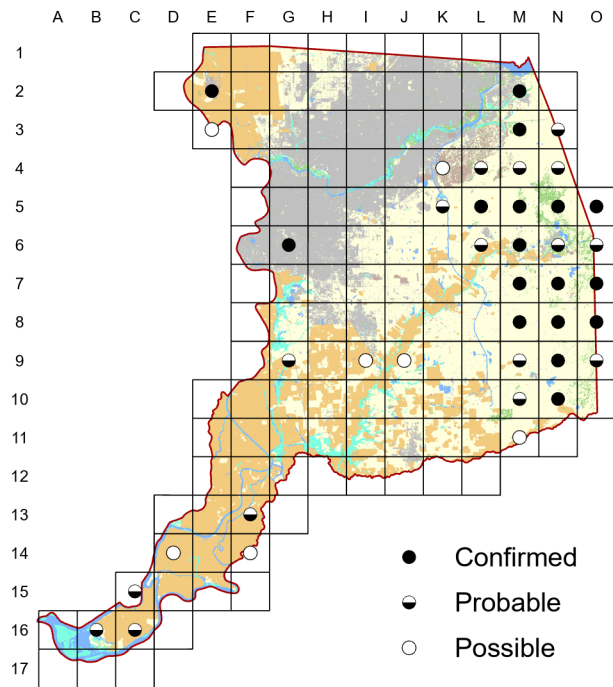


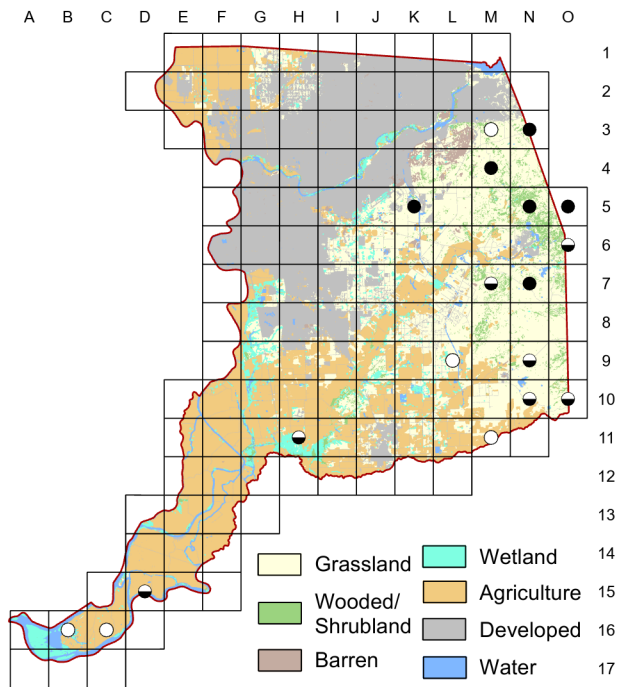
Horned Lark

Eremophila alpestris

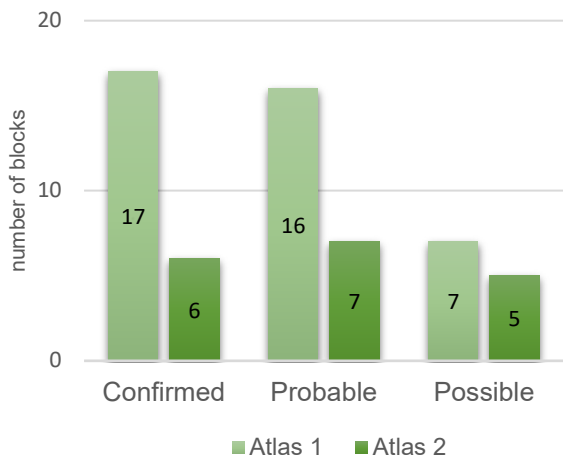
Atlas 1



Atlas 2



Comparison of Atlas Results



The dramatic, and not unexpected, decline of the Horned Lark as a Sacramento County breeder is covered in detail in Chapter Six. With little protection for the grassland that remains in the county, long-term prospects for this species are not promising.

Breeding Bird Survey Trend (1966–2019)

California Rangewide¹
–1.9% / year^s –1.91% / year^s

¹North America; ^ssignificant; Source: Sauer et al. 2020

Breeding Habitat
Grassland/open country

Nest Type
Cup nest in depression in bare ground

24 May 2018

Block M-4

Heard several and my favorite encounter of the day was an adult feeding a fledgling.