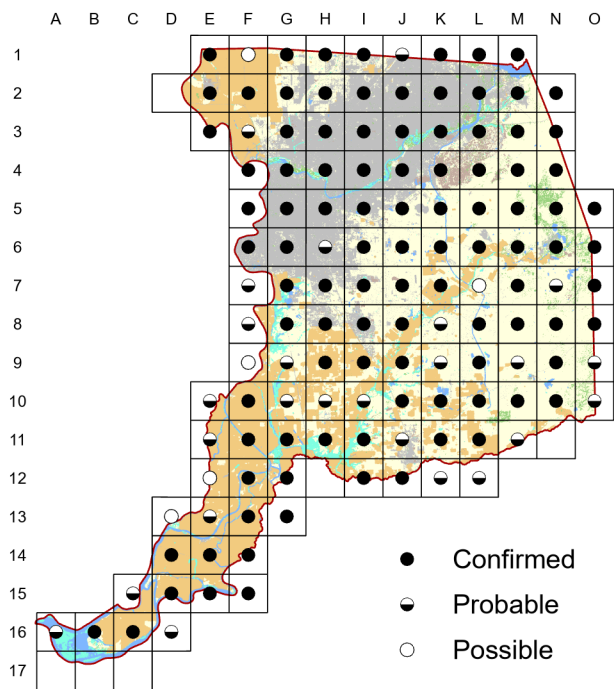


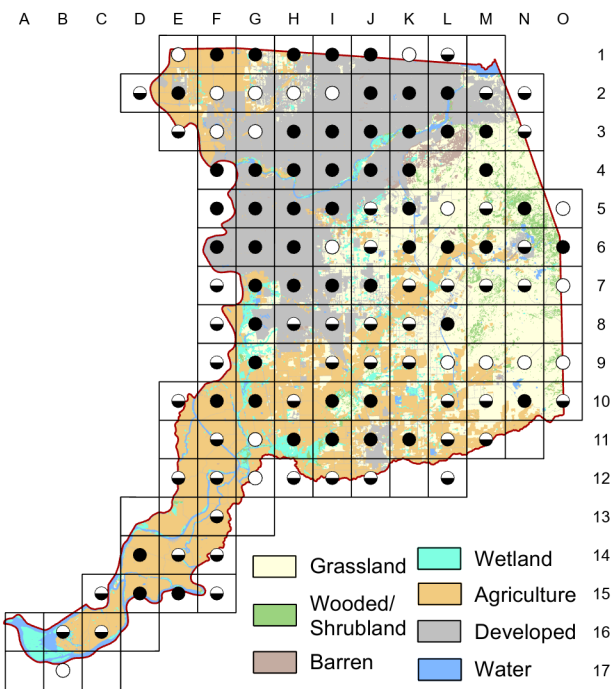
House Finch

Haemorhous mexicanus

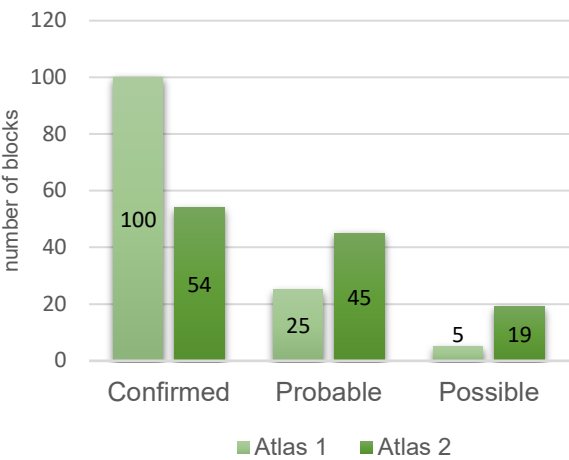
Atlas 1



Atlas 2



Comparison of Atlas Results



As their name suggests, House Finches adapt well to urban and suburban habitats. The distributions of the species in Sacramento County appear very similar in the two atlas periods. The difference in the numbers of confirmed blocks between the two atlases probably reflects the difference in methods of data collection.

Breeding Bird Survey Trend (1966–2019)

California

–1.51% / year^s

Rangewide¹

–0.16% / yearⁿ

¹North America; ^ssignificant, ⁿnonsignificant; Source: Sauer et al. 2020

Breeding Habitat

Woods and brush lands, including urban areas

Nest Type

Cup nest

1903

J. Grinnell and E. Grinnell

The only reason they do not live in the house with us is because they are shut out by the screens.