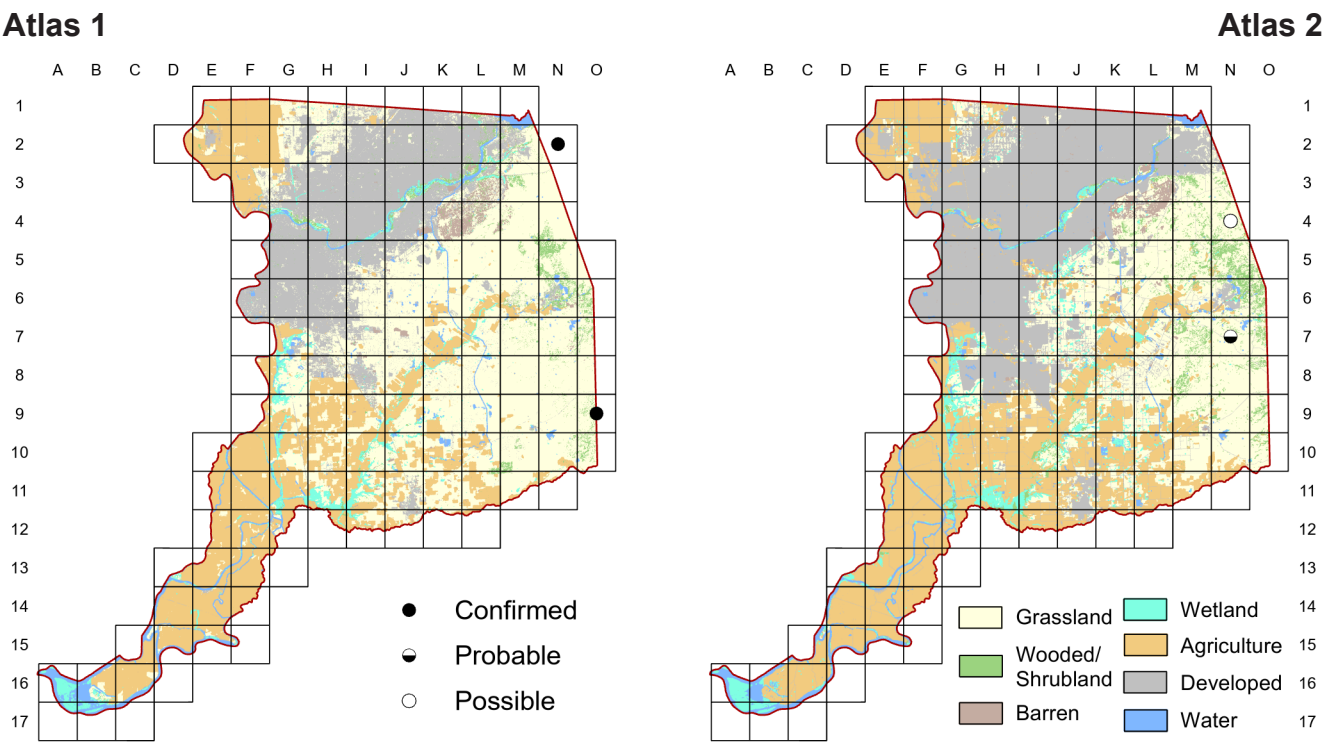


Golden Eagle

Aquila chrysaetos



As the maps confirm, the normal breeding range of the Golden Eagle barely reaches the eastern edge of Sacramento County. The one probable observation from Atlas 2 (block N-7) notes territorial display, but well to the south. Therefore, this could indicate nesting in the nearby block O-9, where this species was confirmed during Atlas 1.

Breeding Bird Survey Trend (1966–2019)

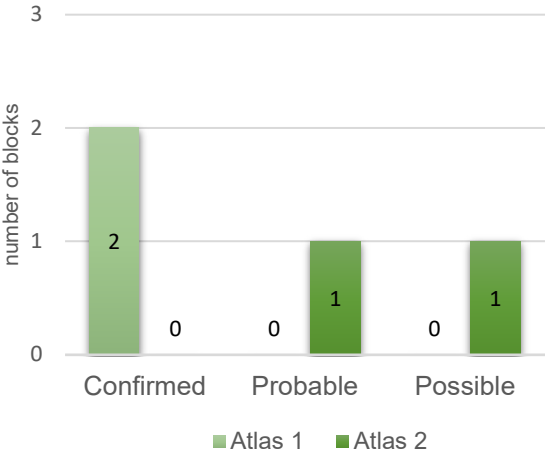
California	Rangewide ¹
–0.22% / year ⁿ	0.21% / year ⁿ

¹North America; ⁿnonsignificant; Source: Sauer et al. 2020

Breeding Habitat

Variety, with cliffs and open country nearby

Comparison of Atlas Results



Nest Type

Stick nest on cliff or in tree

28 April 2018

Block N-7

Adult doing territorial displays far to the south.