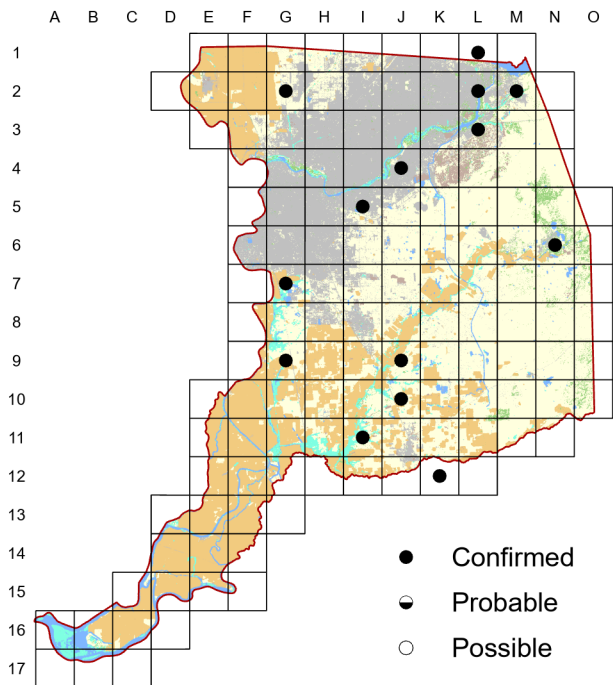
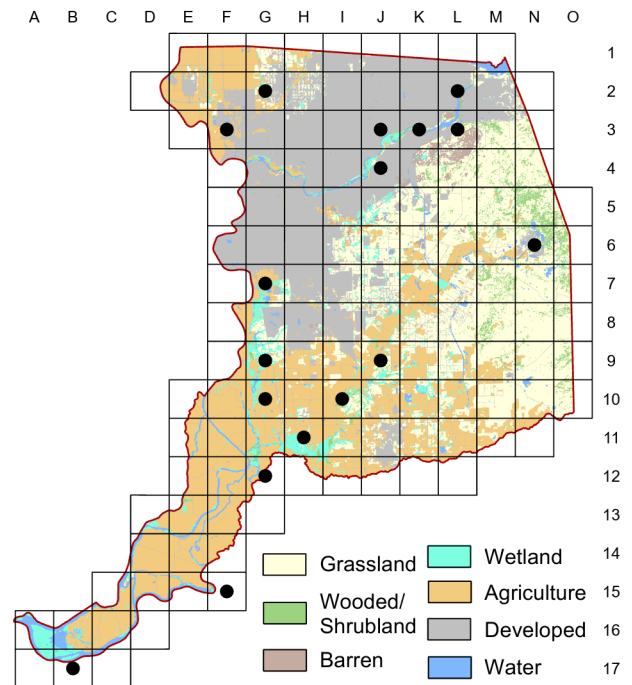


Great Blue Heron *Ardea herodias*

Atlas 1



Atlas 2



Comparison of Atlas Results

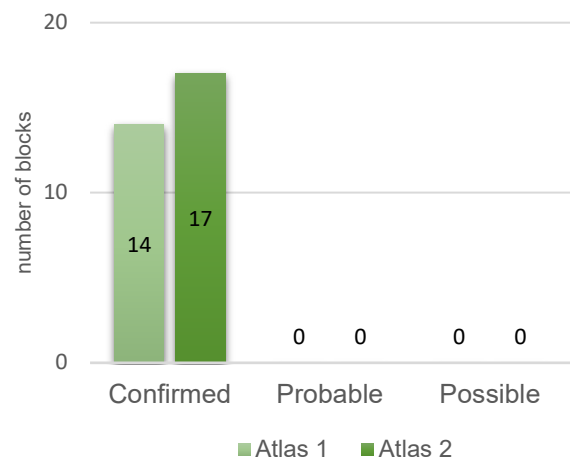
Breeding status of the Great Blue Heron in Sacramento County has remained fairly stable between the two atlas periods. Most colonies are along or near the major river corridors. See Appendix for additional details.

Breeding Bird Survey Trend (1966–2019)

California
-0.22% / yearⁿ

Rangewide¹
0.57% / year^s

¹North America; ^ssignificant, ⁿnonsignificant; Source: Sauer et al. 2020



Breeding Habitat

Stands of trees near water

Nest Type

Stick nest in trees

4 May 1988

Block J-4

Observed about 24 nests with various stages of young in cottonwoods, black walnuts, valley oaks and introduced evergreens.