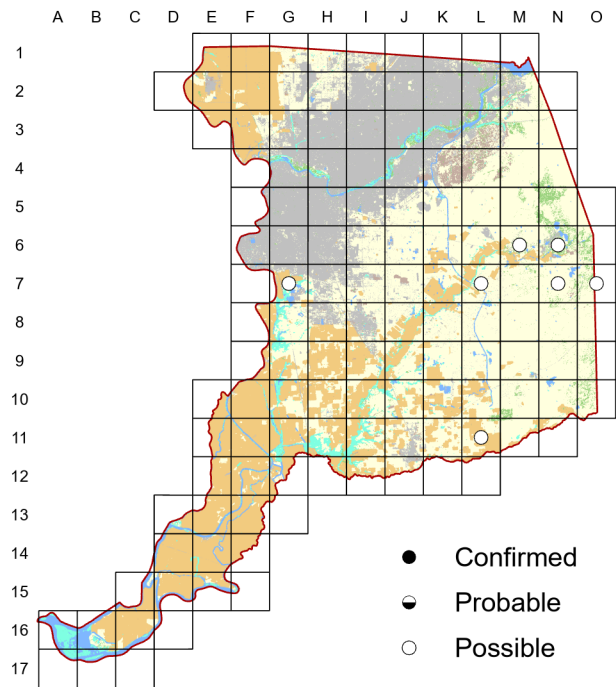
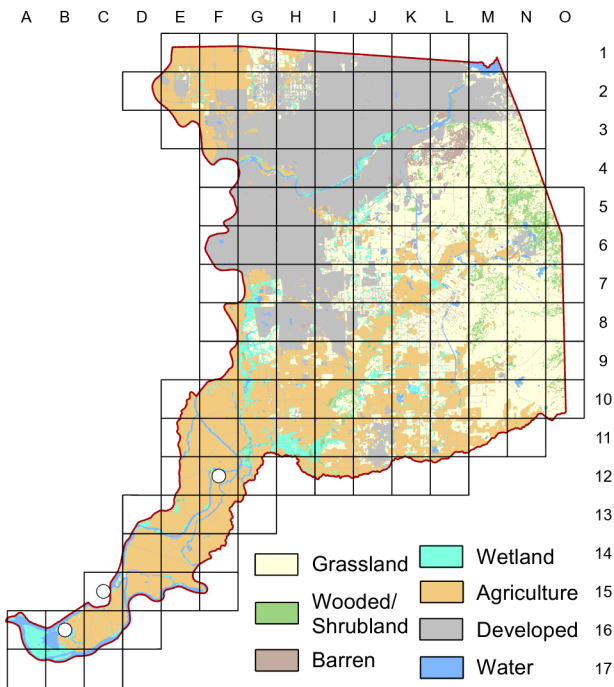


Forster's Tern *Sterna forsteri*

Atlas 1



Atlas 2



The actual status of the Forster's Tern as a breeder in Sacramento County remains a mystery. Atlas 1 had some interesting observations in the central portions of the county, but Atlas 2 observations were confined to the Delta. Two of these involved birds carrying fish, but were coded as possible since the birds may have been heading west into Solano County or south into Contra Costa. There are potential breeding sites in Sacramento County, but nothing definite as yet.

Breeding Bird Survey Trend (1966–2019)

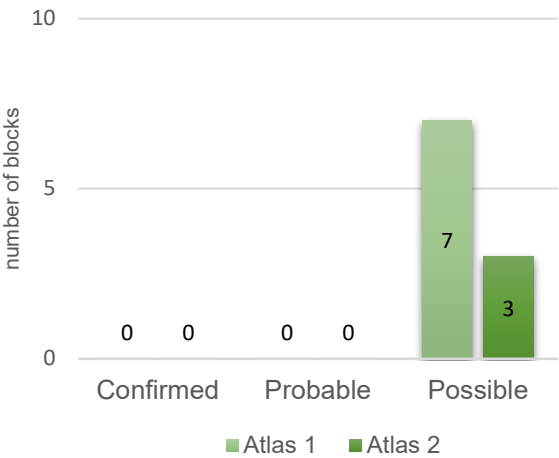
California	Rangewide ¹
-2.47% / year ^s	-1.17% / year ⁿ

¹North America; ^ssignificant, ⁿnonsignificant; Source: Sauer et al. 2020

Breeding Habitat

Deep wetlands with expanses of open water

Comparison of Atlas Results



Nest Type

Variety, from simple scrape to floating raft

5 April 2018

Block B-16

Carrying fish, could have been heading south to Contra Costa.