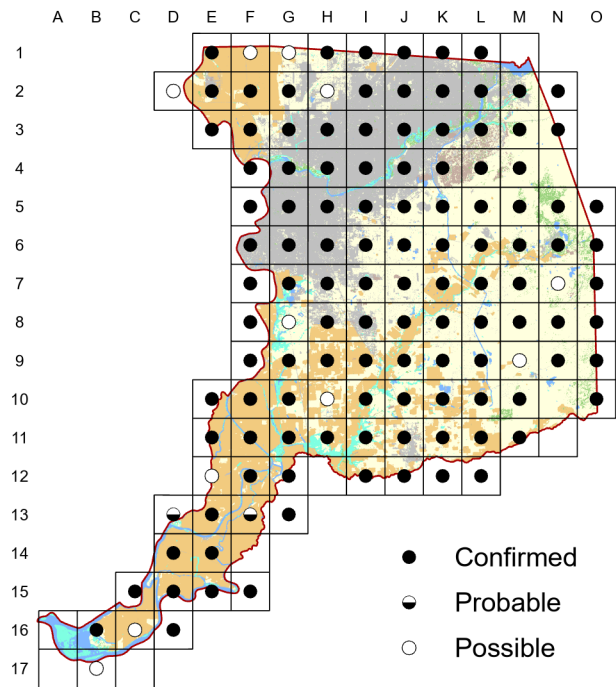


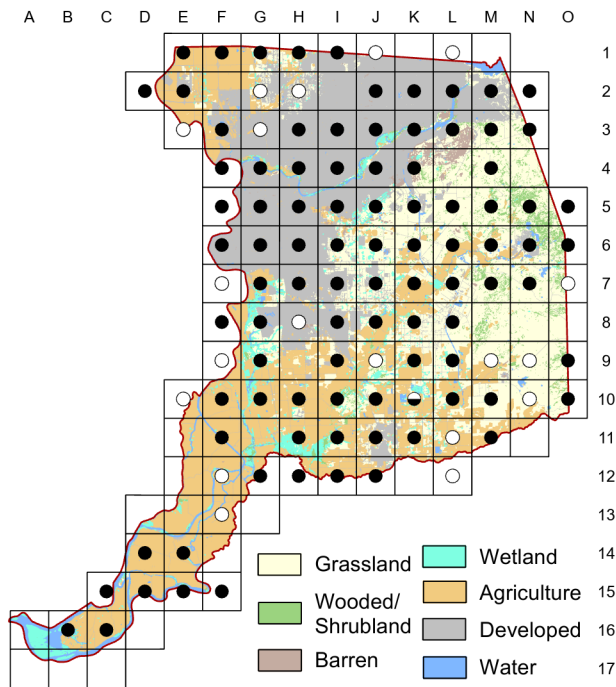
European Starling

Sturnus vulgaris

Atlas 1



Atlas 2



As discussed in Chapter Four, the European Starling is one of a handful of long-tenured introduced birds that are beginning to show signs of decline. However, the relatively small changes between the two atlases is inconclusive about local trends. The hope is that native cavity-nesters are beginning to adapt to and compete more effectively with these aggressive transplants.

Breeding Bird Survey Trend (1966–2019)

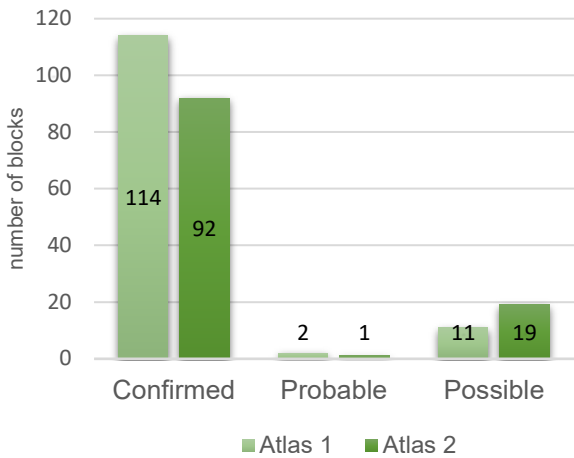
California	Rangewide ¹
–0.2% / year ⁿ	–1.3% / year ^s

¹North America; ^ssignificant, ⁿnonsignificant; Source: Sauer et al. 2020

Breeding Habitat

Wide variety

Comparison of Atlas Results



Nest Type

Cavity

11 March 2018

Block F-6

Entering hole in end of soccer goal post that a pair of Western Bluebirds was also exploring.