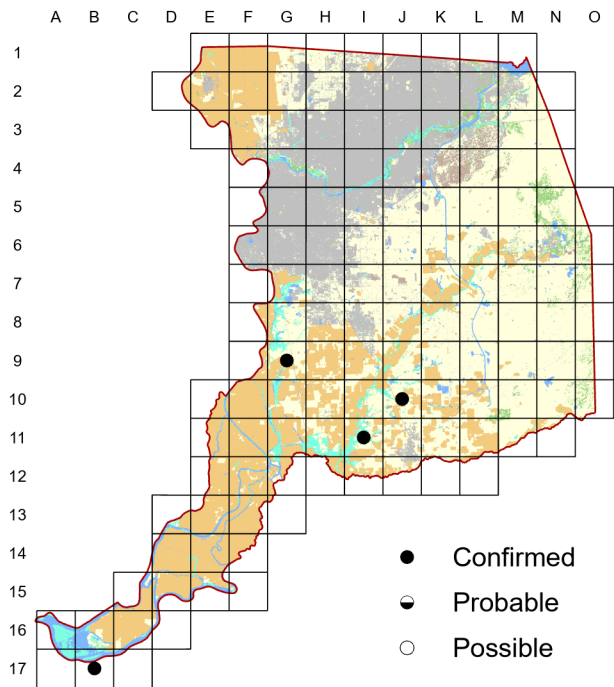


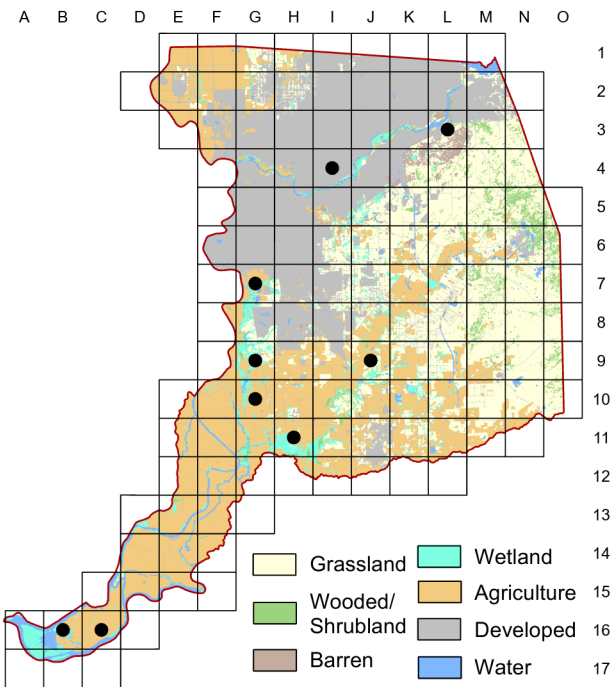
Double-crested Cormorant

Phalacrocorax auritus

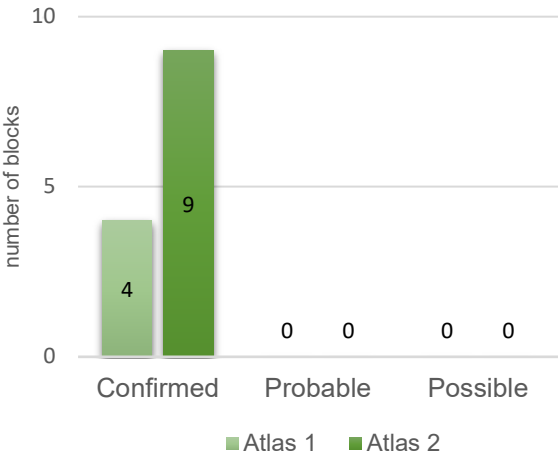
Atlas 1



Atlas 2



Comparison of Atlas Results



The doubling of occupied blocks (and colonies) by Double-crested Cormorant between atlas projects is somewhat misleading, as breeding in a number of blocks in Atlas 2 involves only a few pairs and occupancy of some large colonies has fluctuated dramatically between atlas periods. See Appendix for additional details.

Breeding Bird Survey Trend (1966–2019)

California	Rangewide ¹
2.43% / year ⁿ	2.55% / year ^s

¹North America; ^ssignificant, ⁿnonsignificant; Source: Sauer et al. 2020

Breeding Habitat

Ponds, lakes, rivers, etc. with nearby trees

Nest Type

Stick nest in trees or other structures

1940

I. Gabrielson and S. Jewett

A cormorant colony is usually a rather smelly place. The nests are filthy, and the trees that support them are liberally white-washed with excrement...dead birds, both old and young, add to the stench.