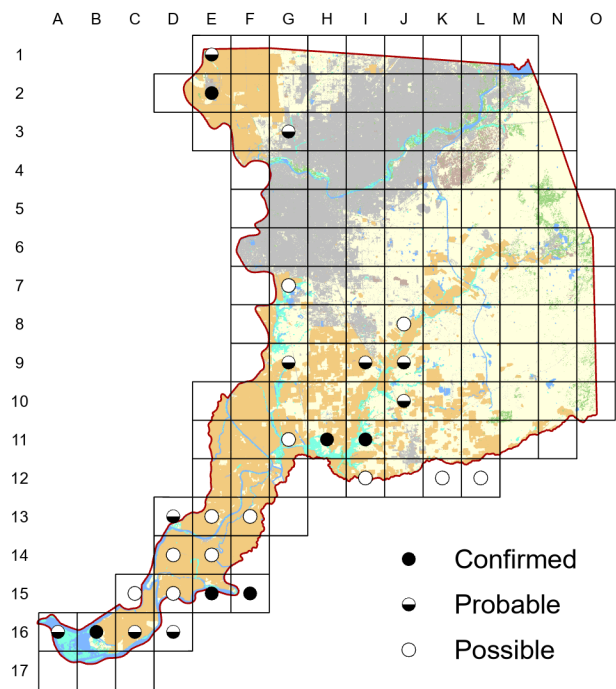


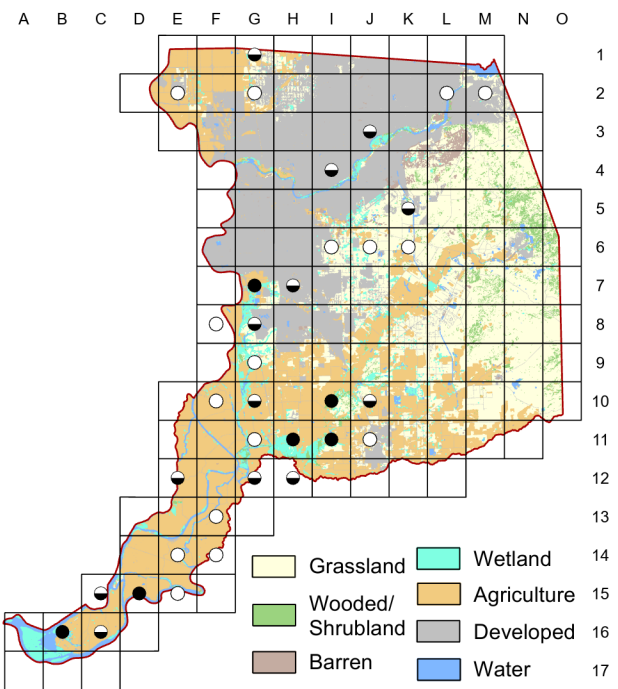
Common Yellowthroat

Geothlypis trichas

Atlas 1



Atlas 2



The status of the Common Yellowthroat was similar between the two atlases. Despite losses in the northwestern part of the county (Natomas Basin), overall numbers of blocks slightly increased in Atlas 2. With breeding requirements similar to the Song Sparrow, more breeding documentation in the American River Parkway may indicate maturing habitat. This warbler is quite vocal and conspicuous where present.

Breeding Bird Survey Trend (1966–2019)

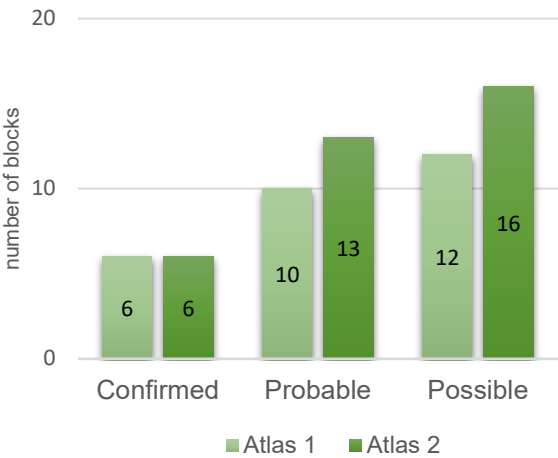
California	Rangewide ¹
2.34% / year ^s	-0.56% / year ^s

¹North America; ^ssignificant; Source: Sauer et al. 2020

Breeding Habitat

Dense vegetation in or near wetlands or riparian

Comparison of Atlas Results



Nest Type

Cup nest on or near the ground

14 August 2013

Block G-7

Must have gotten near a nest or new fledglings. Female was flying low in front of me and hopping with wings spread.