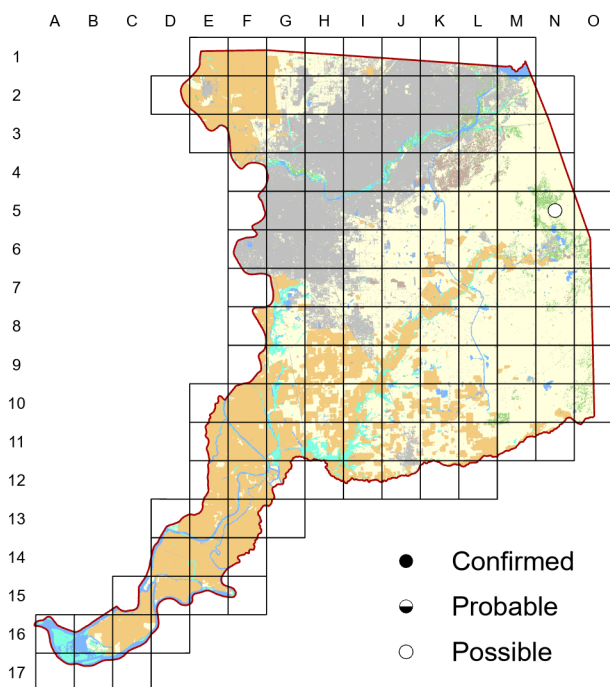
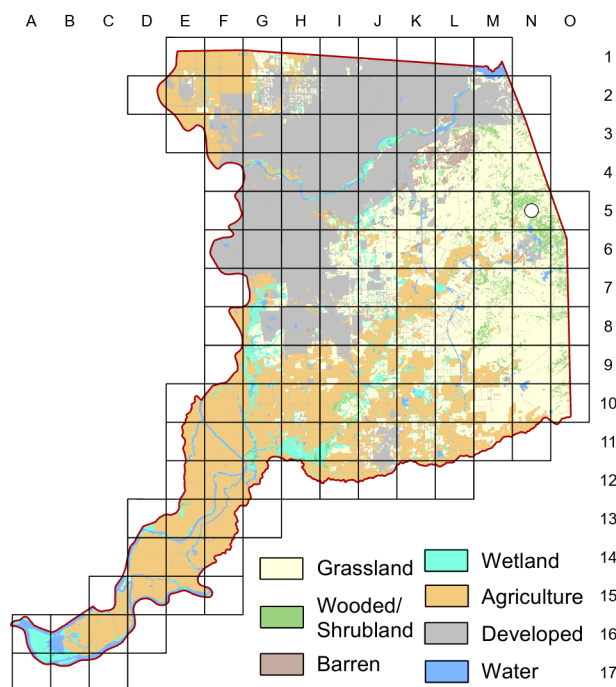


Common Poorwill *Phalaenoptilus nuttallii*

Atlas 1



Atlas 2



Common Poorwills are occasionally heard singing in breeding season, and they were found in the same block in both atlas periods. Most county records are of fall migrants, primarily in the east, often detected as they forage and roost on roads at night. A few spring migrants are also detected, which can be hard to separate from potential breeders. Limited access and coverage where the species might breed in the low foothills compounds uncertainty.

Breeding Bird Survey Trend (1966–2019)

California
–0.23% / yearⁿ

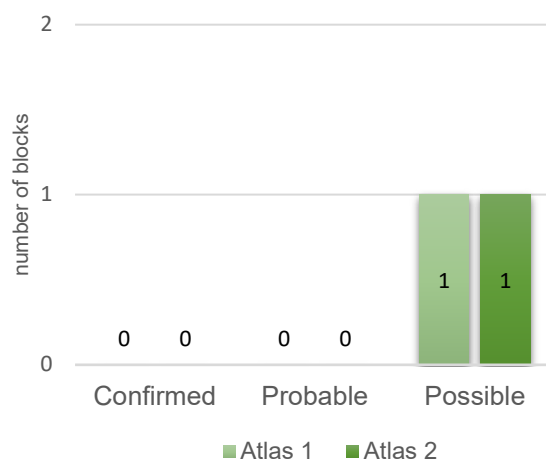
Rangewide¹
–0.09% / yearⁿ

¹North America; ⁿnonsignificant; Source: Sauer et al. 2020

Breeding Habitat

Open brushy habitats, rocky areas

Comparison of Atlas Results



Nest Type

Eggs laid directly on ground or other flat surface

14 April 2014

Block N-5

Started calling at 8:10 PM. South side of Latrobe,
about 0.5 miles east of intersection with Stone House Road.