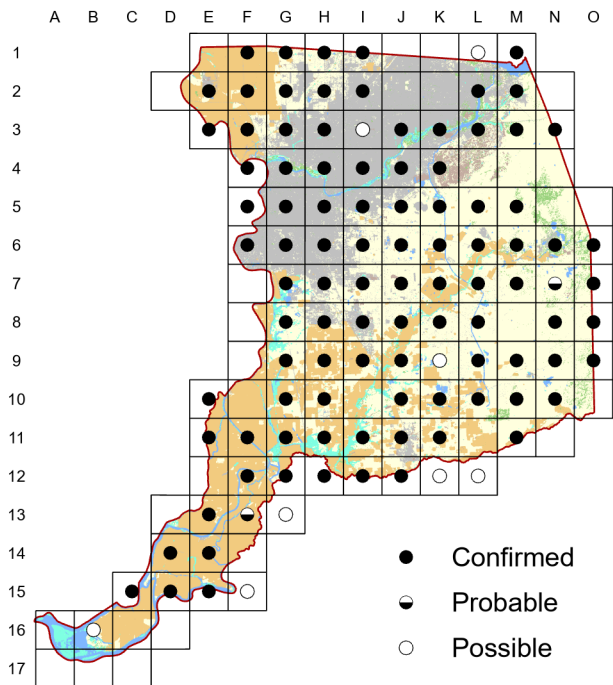
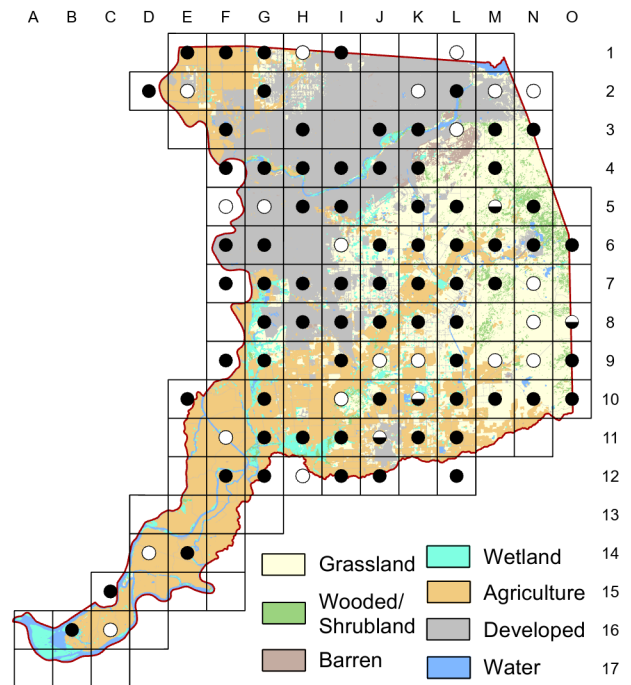


Cliff Swallow *Petrochelidon pyrrhonota*

Atlas 1



Atlas 2



The Cliff Swallow appears to be relatively stable throughout the county, where their mud nest colonies seem to adorn nearly every water crossing.

Breeding Bird Survey Trend (1966–2019)

California
-1.16% / year^s

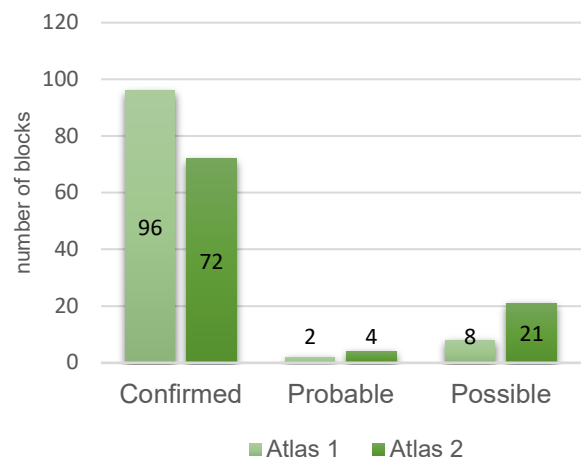
Rangewide¹
0.82% / yearⁿ

¹North America; ^ssignificant, ⁿnonsignificant; Source: Sauer et al. 2020

Breeding Habitat

Variety of open or semi-open habitats

Comparison of Atlas Results



Nest Type

Mud nest attached to covered wall

9 April 2017

Block L-8

Flying around bridge over canal and gathering mud nearby.