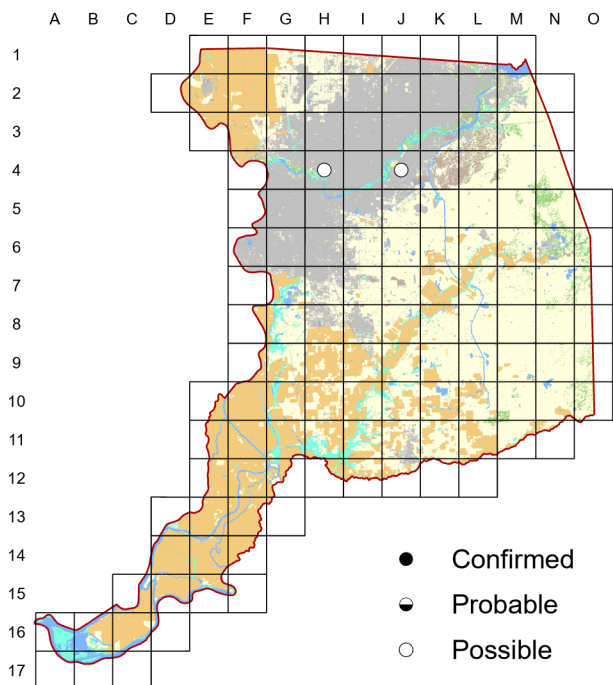
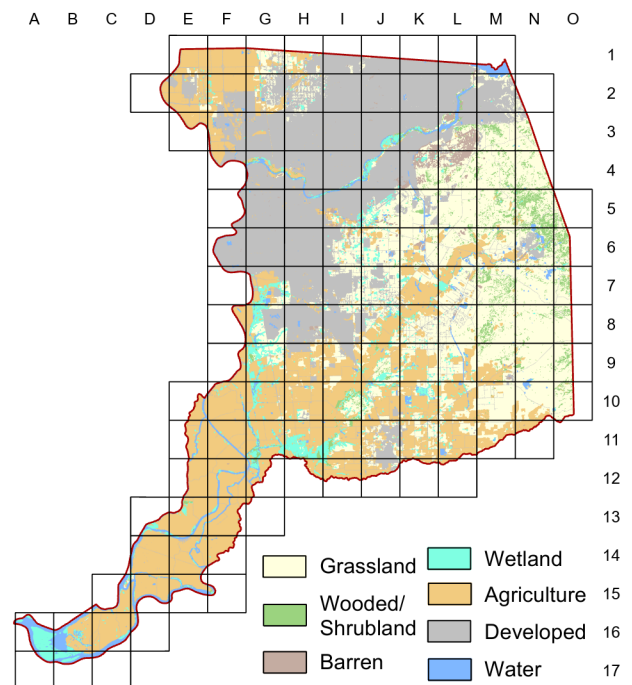


California Thrasher *Toxostoma redivivum*

Atlas 1



Atlas 2



California Thrashers breed in foothill chaparral, with a few dispersing to the valley floor along riparian corridors. Nearly all records for the county are from the American River Parkway, with breeding suspected but not confirmed at Bushy Lake in the 1970s. Possible records for Atlas 1 involved singing birds in May at two sites along the parkway, one in 1988 and the other in 1988 and 1989.

Breeding Bird Survey Trend (1966–2019)

California
–0.7% / yearⁿ

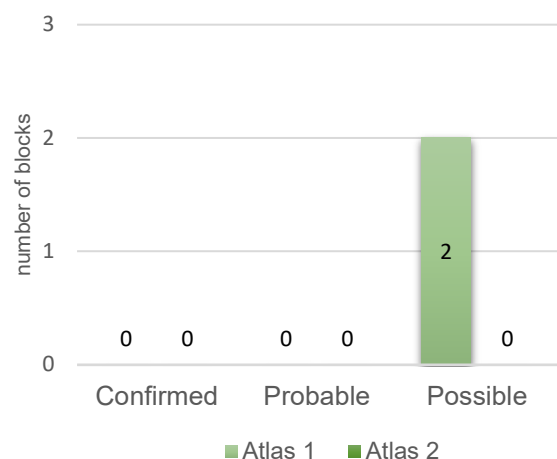
Rangewide¹
–0.7% / yearⁿ

¹North America; ⁿnonsignificant; Source: Sauer et al. 2020

Breeding Habitat

Chaparral, woodland with dense understory

Comparison of Atlas Results



Nest Type

Loose cup nest in shrub

1890

L. Belding

Very common in the foothills, occasionally seen in the valley thickets.