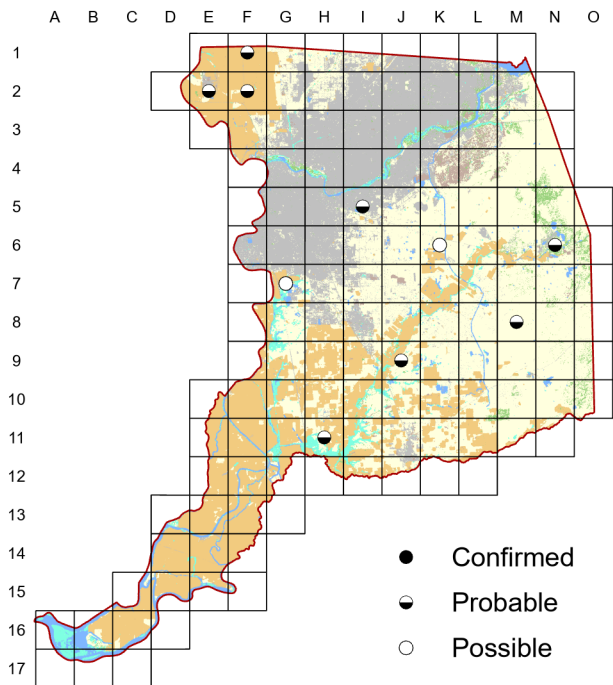
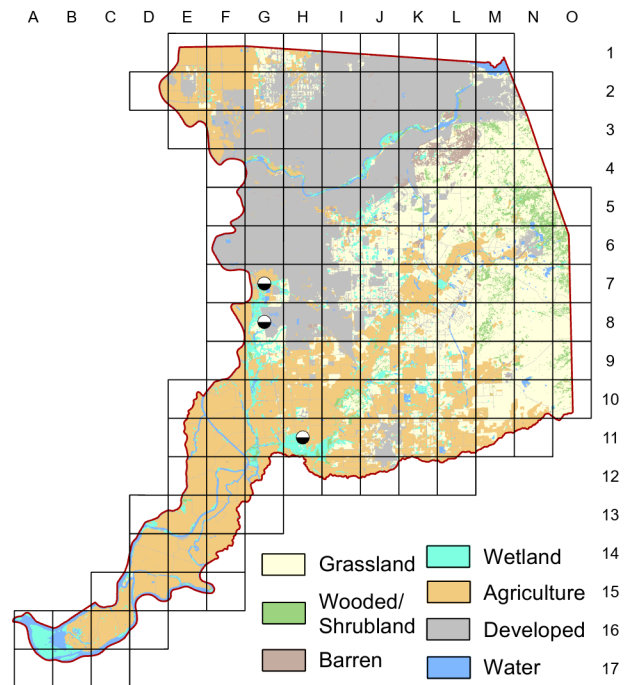


Blue-winged Teal *Spatula discors*

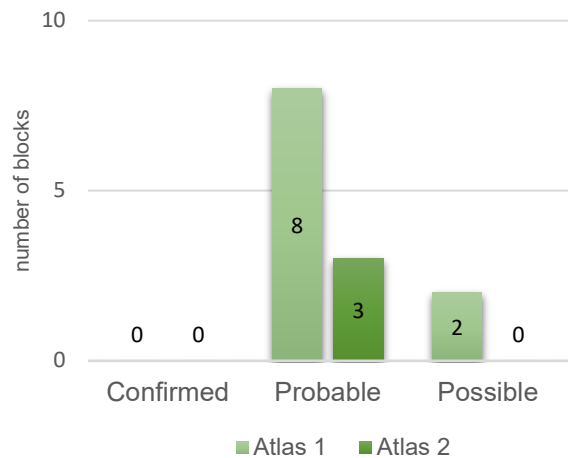
Atlas 1



Atlas 2



Comparison of Atlas Results



An uncommon breeding species in the Central Valley, the Blue-winged Teal appears to breed in protected areas of wetlands in the county.

Breeding Bird Survey Trend (1966–2019)

California
-1.69% / yearⁿ

Rangewide¹
0.27% / yearⁿ

¹North America; ⁿnonsignificant; Source: Sauer et al. 2020

Breeding Habitat

Shallow ponds/wetland

Nest Type

Scrape near water, lined with plant matter and down

29 April 2016

Block H-11

Three separate pairs were visible at one time in the duckiest pond along the road. One pair was demonstrating a head-bobbing courtship display that I have never witnessed before.