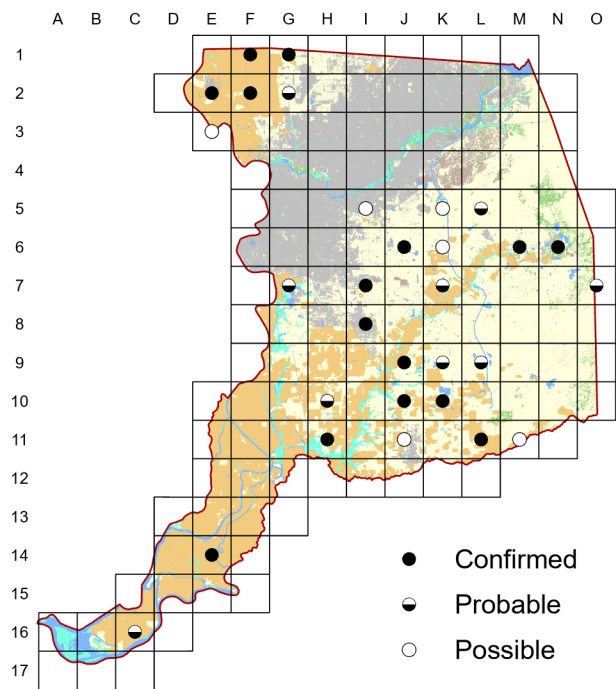
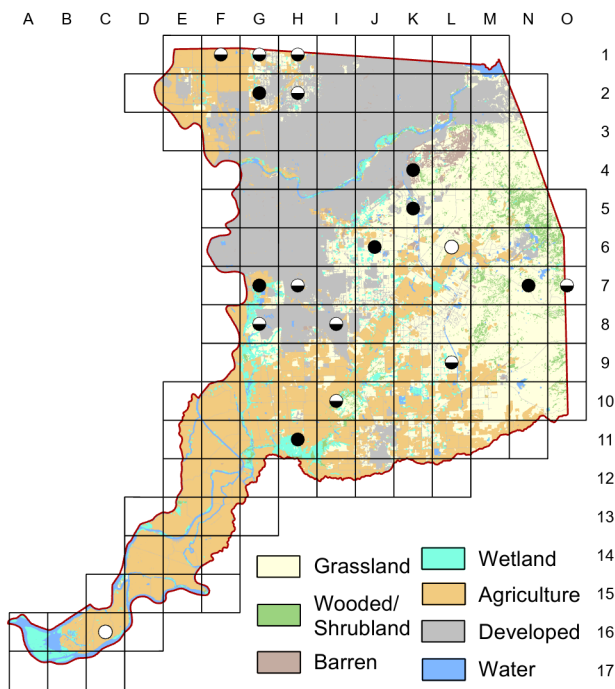


# Black-necked Stilt *Himantopus mexicanus*

Atlas 1



Atlas 2



The Black-necked Stilt tends to nest near wetlands with more emergent vegetation than the American Avocet, which may explain why the species was detected in more blocks in each atlas, as many semi-permanent wetlands in the Central Valley are managed as deep-water emergent marsh. However, like the avocet, the stilt apparently declined, detected in fewer blocks in Atlas 2.

### Breeding Bird Survey Trend (1966–2019)

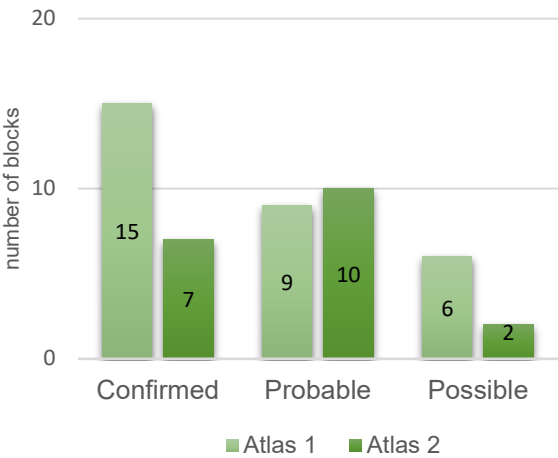
California	Rangewide <sup>1</sup>
–1.35% / year <sup>n</sup>	1.11% / year <sup>n</sup>

<sup>1</sup>North America; <sup>n</sup>nonsignificant; Source: Sauer et al. 2020

### Breeding Habitat

Shallow wetland with emergent vegetation

### Comparison of Atlas Results



### Nest Type

Scrape with plant matter

23 May 2020

Block K-4

Two adults on nests. Two other adults with young huddled under their wings.