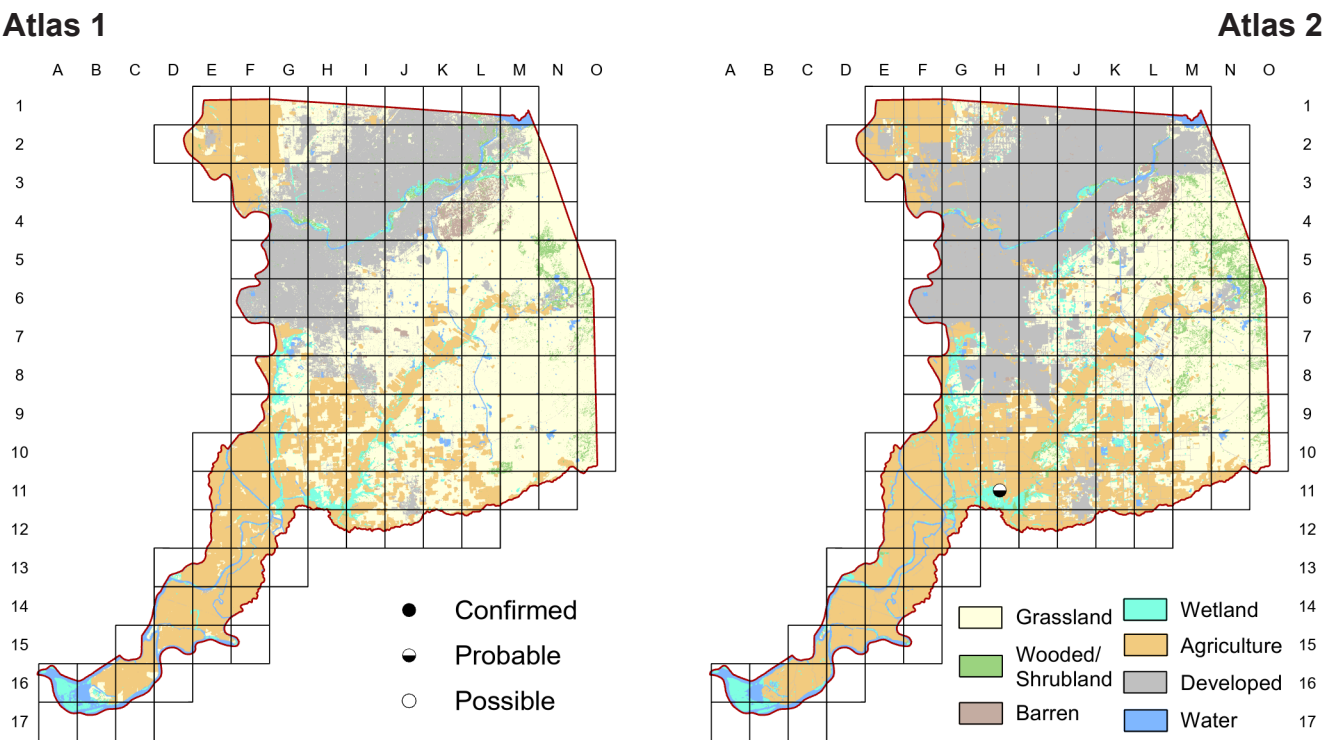


Black Rail

Laterallus jamaicensis



As discussed in Chapter Four, the appearance of the Black Rail as a potential breeder outside the Delta would not have been considered at all likely to Atlas 1 participants. Confirming breeding for most rails, and certainly for this very secretive one, is always difficult. But observations of singing birds well into the breeding season indicated probable breeding in at least one block in Atlas 2.

Breeding Bird Survey Trend (1966–2019)

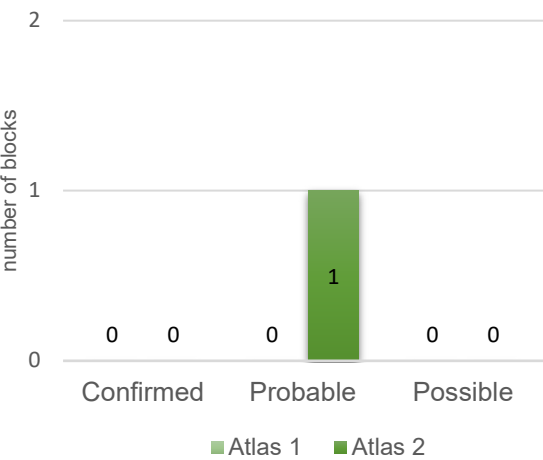
California	Rangewide <sup>1</sup>
No Data	No Data

<sup>1</sup>North America; Source: Sauer et al. 2020

Breeding Habitat

Shallow wetland with emergent vegetation

Comparison of Atlas Results



Nest Type

Concealed woven bowl

1927

R. Hoffman

There is probably no bird in the United States that eludes observation more successfully than this mouse-like inhabitant.