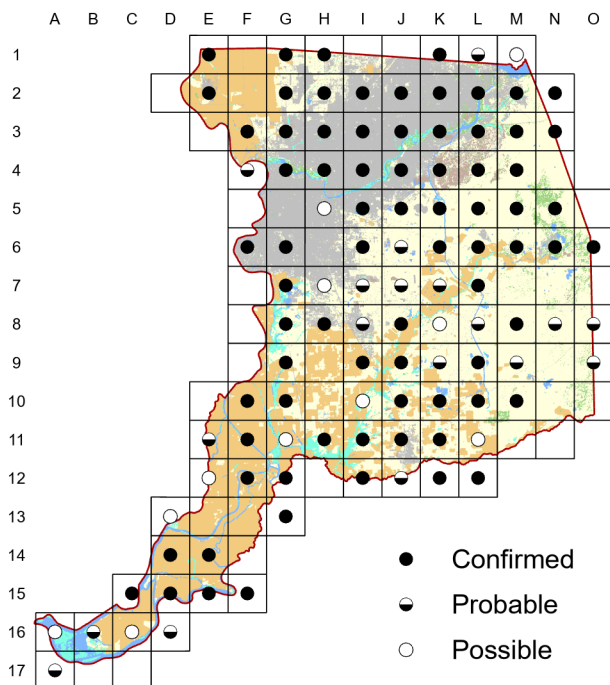
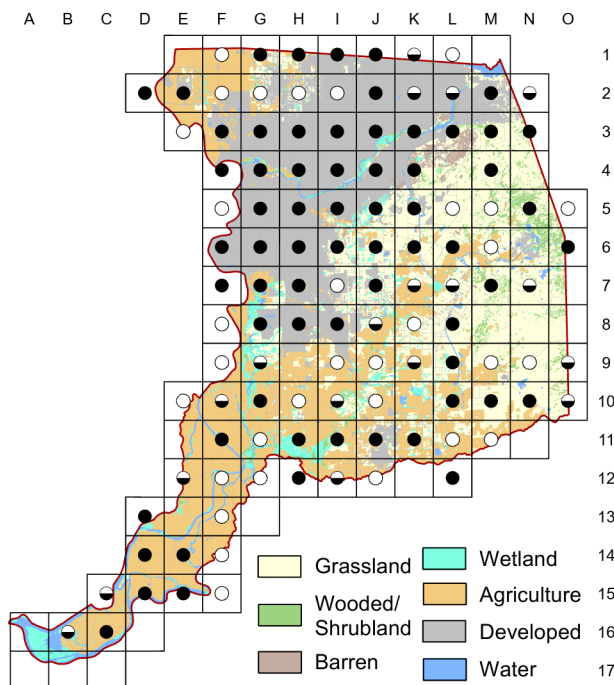


Black Phoebe *Sayornis nigricans*

Atlas 1



Atlas 2



Frequently securing their nests to human-built structures, the Black Phoebe remains a commonly observed breeding species throughout Sacramento County. The high proportion of confirmations likely reflects just how comfortable this bird seems to be around humans. A remarkably confiding and approachable species.

Breeding Bird Survey Trend (1966–2019)

California
2.86% / year^s

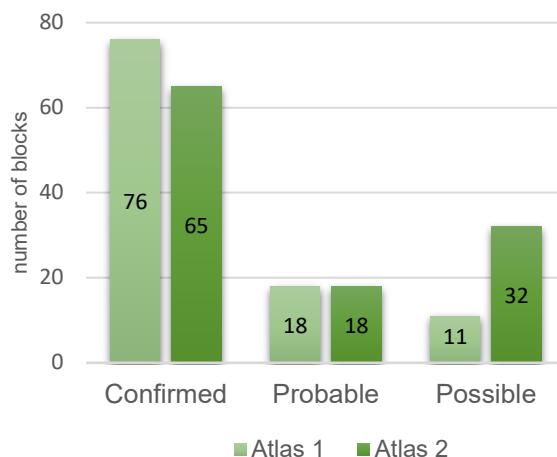
Rangewide¹
2.4% / year^s

¹North America; ^ssignificant; Source: Sauer et al. 2020

Breeding Habitat

Variety of habitats, but always near water

Comparison of Atlas Results



Nest Type

Cup nest on sheltered ledge or wall

18 March 2018

Block I-8

Two individuals that don't seem to mind people. As I was walking around some crane flies flushed from the grass, and one phoebe came towards me and snapped up the crane flies.