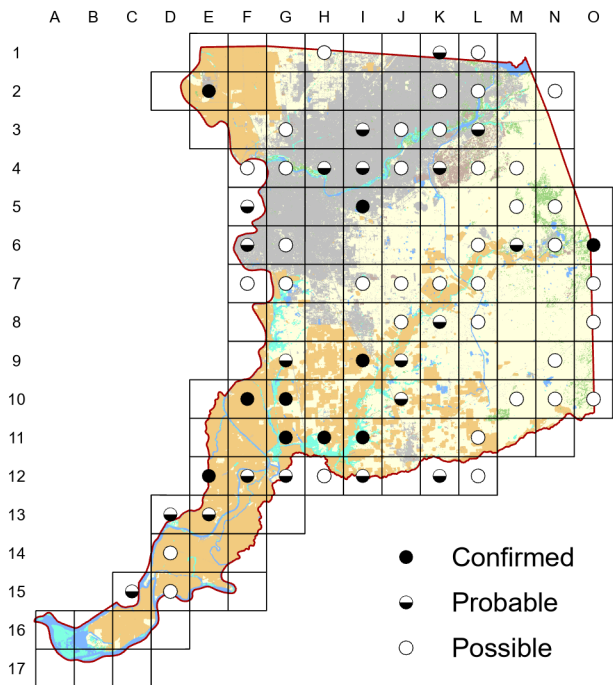
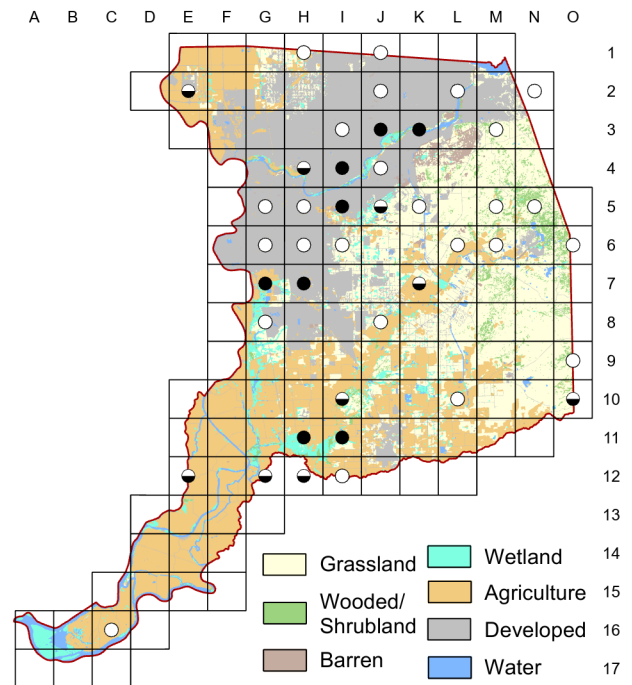


Black-headed Grosbeak *Pheucticus melanocephalus*

Atlas 1



Atlas 2



The detection of local breeding Black-headed Grosbeaks can be swamped by abundant singing migrants, so getting a clear picture of breeding activity, especially early in the season, is a challenge. Net reductions in evidence of breeding and confirmations may reflect differences in access, effort, and personnel between the atlas projects, or may indicate modest declines.

Breeding Bird Survey Trend (1966–2019)

California
–0.28% / yearⁿ

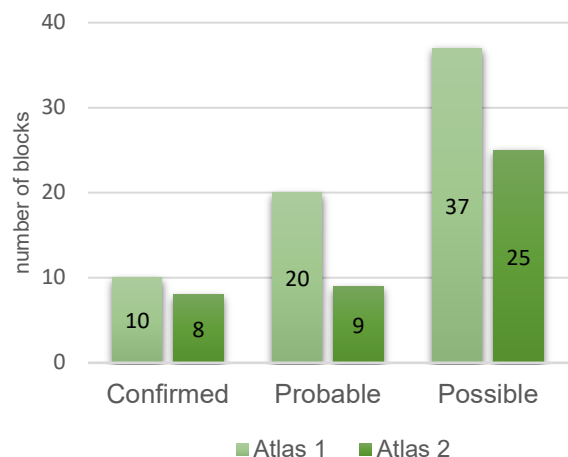
Rangewide¹
0.42% / year^s

¹North America; ^ssignificant, ⁿnonsignificant; Source: Sauer et al. 2020

Breeding Habitat

Variety of woodlands, especially riparian ones

Comparison of Atlas Results



Nest Type

Cup nest in small tree or bush

19 June 2020

Block H-11

John showed me a nest that had contained large young last week.