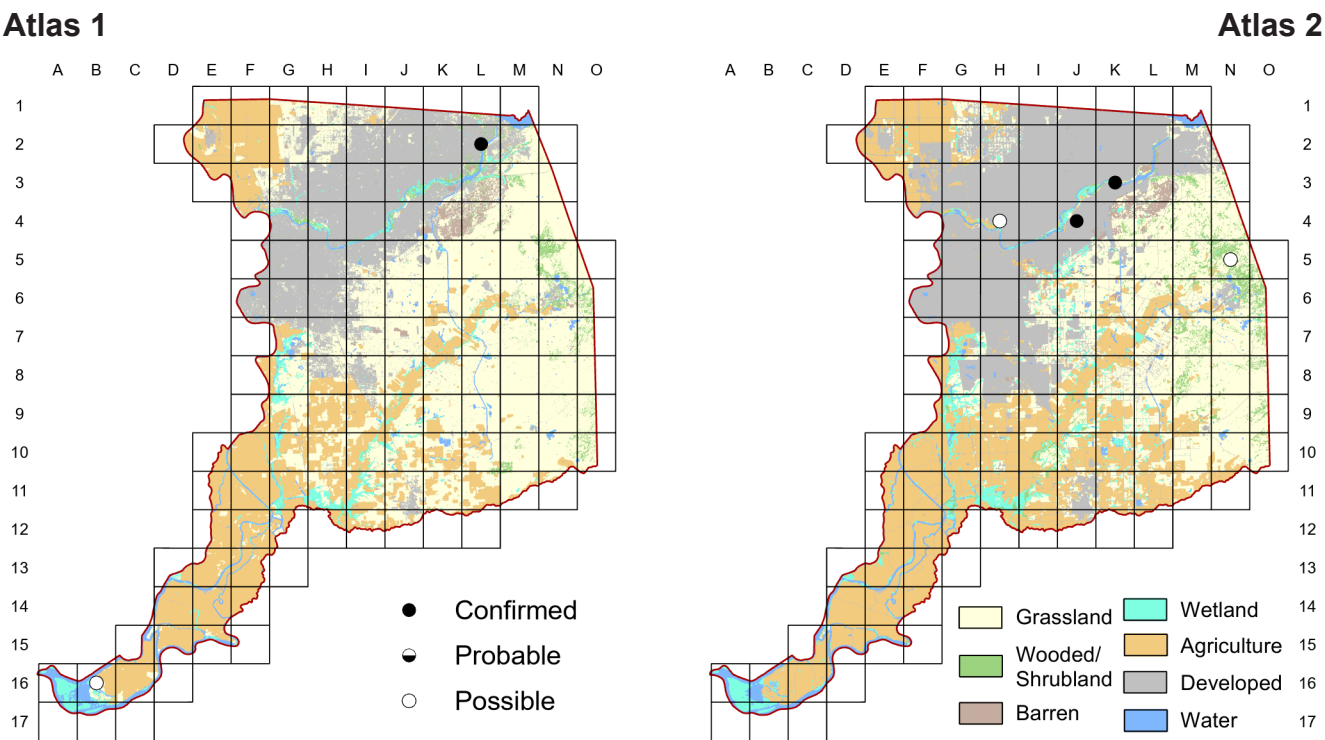


Blue-gray Gnatcatcher *Polioptila caerulea*



In each atlas, breeding Blue-gray Gnatcatchers were confirmed along the American River in riparian habitats with a shrubby understory. While this species’ presence in more blocks during Atlas 2 does not confirm an increase, that would be consistent with the regional and rangewide positive trends. This bird remains a sparsely distributed and uncommon breeder on the Central Valley floor, much more common in Sierra and Coast Range foothills.

Breeding Bird Survey Trend (1966–2019)

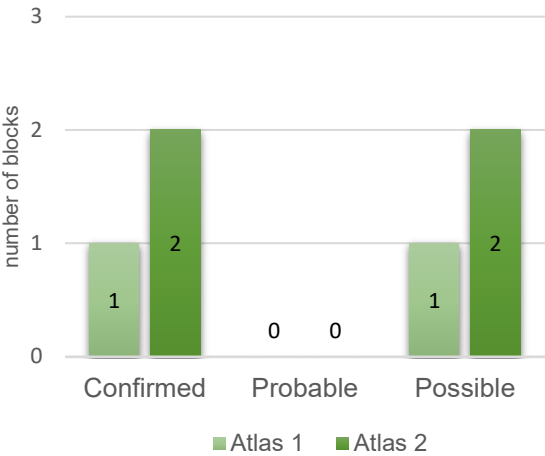
California	Rangewide ¹
2.19% / year^s	0.3% / year^s

¹North America; ^ssignificant; Source: Sauer et al. 2020

Breeding Habitat

Variety of woodlands and shrublands

Comparison of Atlas Results



Nest Type

Finely constructed cup nest

10 May 2019

Block J-4

Approximately 70 yards past the horse trailer lot along a main fire road; he attacked an Acorn Woodpecker that landed in his tree.