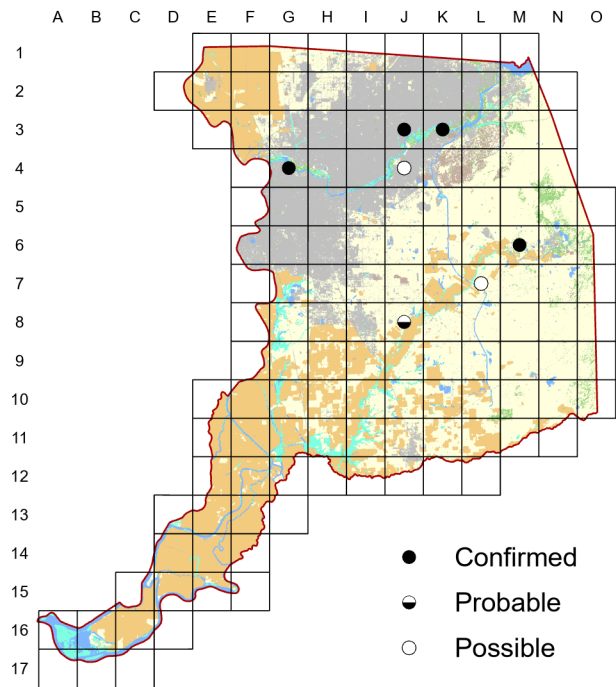
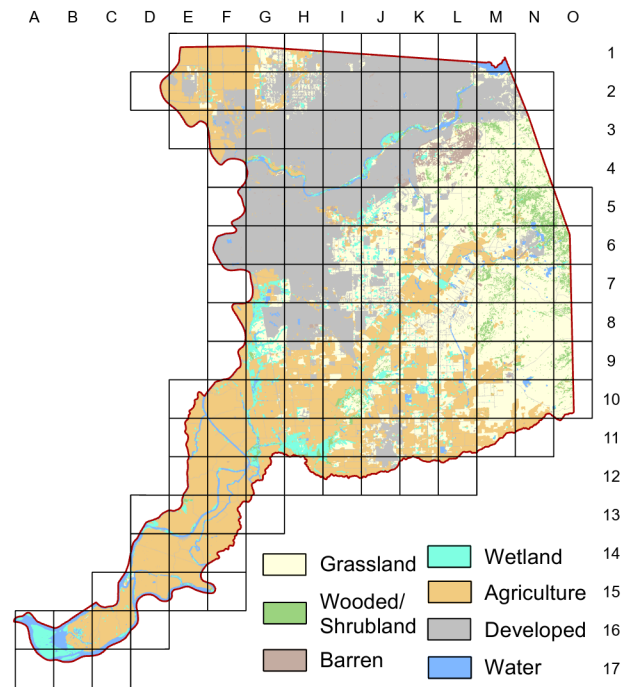


# Bank Swallow *Riparia riparia*

Atlas 1



Atlas 2



As discussed in Chapter Four, Bank Swallows have declined throughout their range in California and the species has not been observed breeding in the county for many years. The last active site was in the cliffs on the north side of the upper American River Parkway where potential breeding habitat remains. However, only Northern Rough-winged Swallows breed there now.

### Breeding Bird Survey Trend (1966–2019)

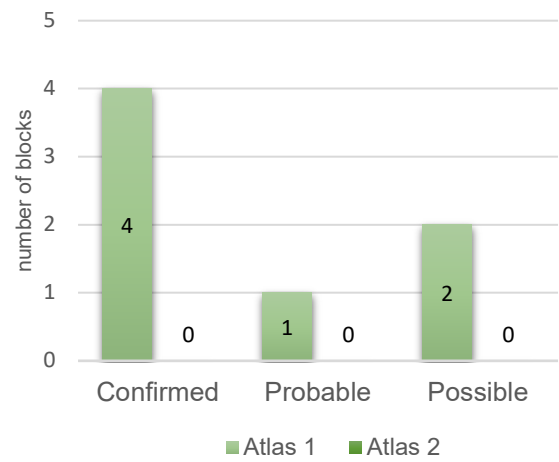
California	Rangewide <sup>1</sup>
–3.54% / year <sup>n</sup>	–3.69% / year <sup>s</sup>

<sup>1</sup>North America; <sup>s</sup>significant; Source: Sauer et al. 2020

### Breeding Habitat

Open areas near water  
with suitable nesting sites

### Comparison of Atlas Results



### Nest Type

Cavity excavated in sandy or gravelly banks  
or cliffs

1938

L. K. Beyer

They seem to like to poise on beating wings before the face of the bank where the nests are located, holding their position for a few seconds and then wheeling away.