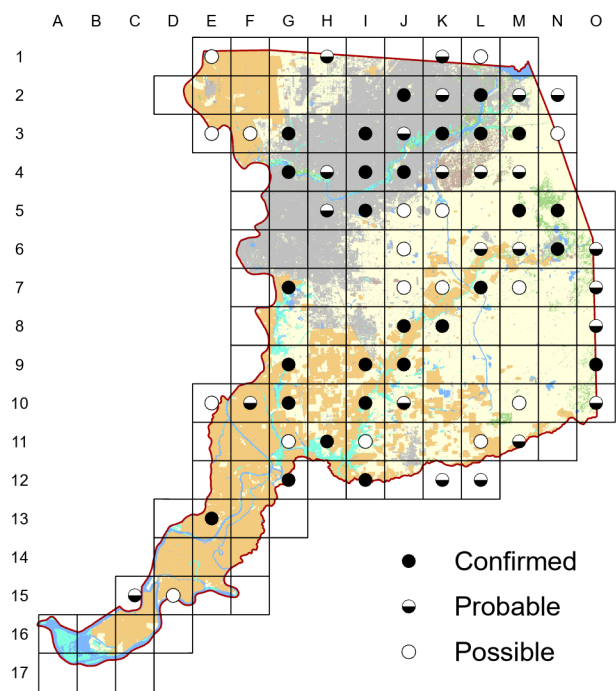
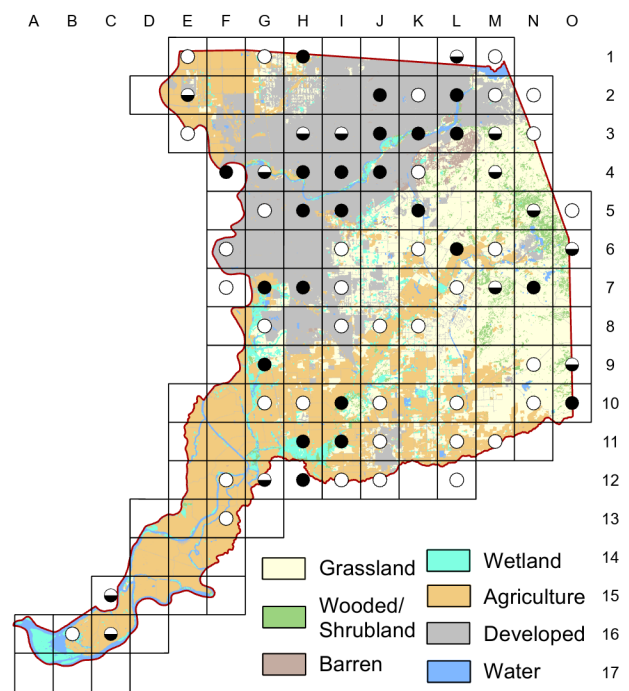


Ash-throated Flycatcher *Myiarchus cinerascens*

Atlas 1



Atlas 2



We saw little change in breeding distribution for the Ash-throated Flycatcher between the atlases. Breeding was concentrated mainly along riparian areas of the American and Cosumnes rivers and in oak savanna habitats in the eastern parts of the county. The apparent lack of Atlas 2 confirmations along the Cosumnes River may be due to relative lack of access during that effort.

Breeding Bird Survey Trend (1966–2019)

California
0.2% / yearⁿ

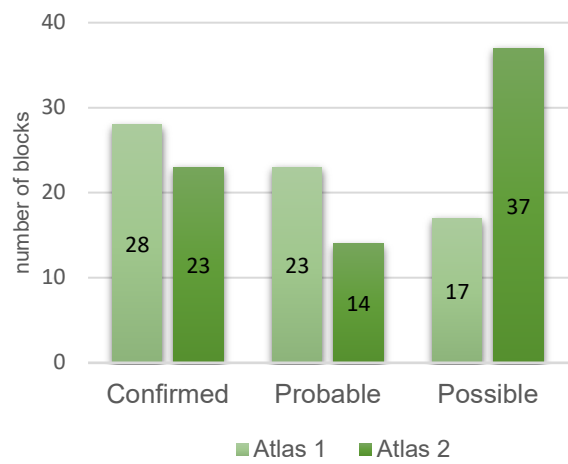
Rangewide¹
0.71% / year^s

¹North America; ^ssignificant, ⁿnonsignificant; Source: Sauer et al. 2020

Breeding Habitat

Open woodland, woodland edges

Comparison of Atlas Results



Nest Type

Cavity

5 June 2016

Block G-7

Feeding young in tall kestrel box. Took what looked like a moth into the box and flew out without it.