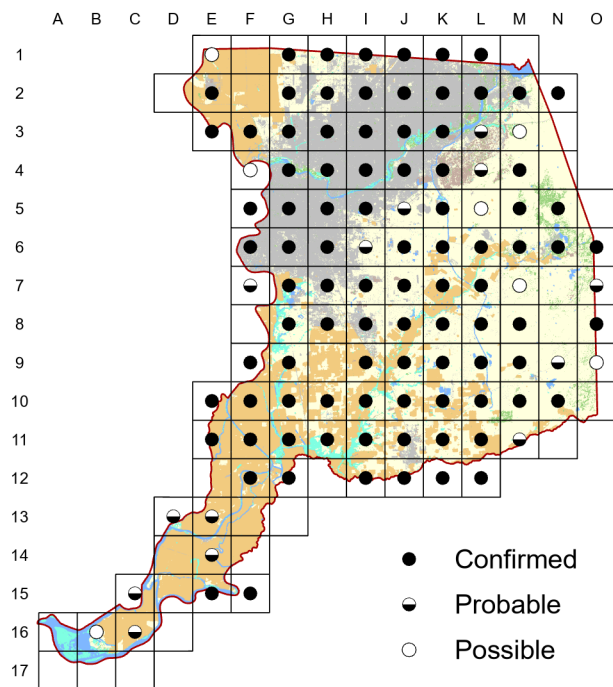


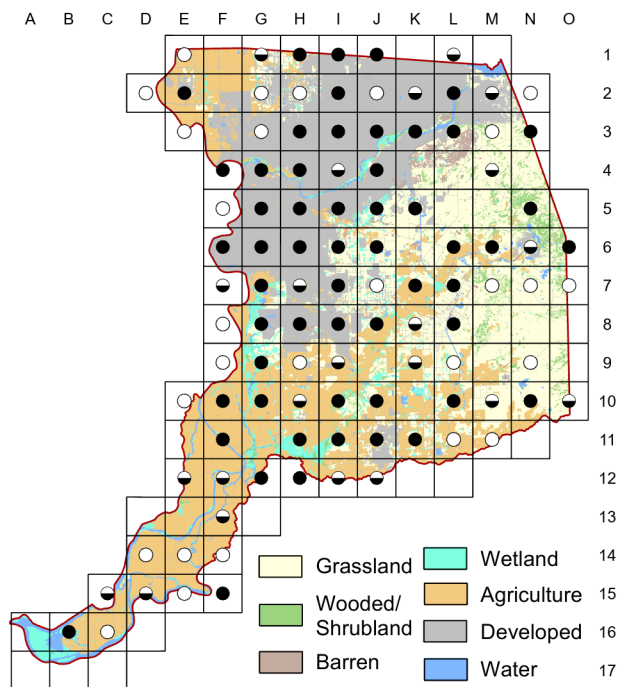
American Robin

Turdus migratorius

Atlas 1



Atlas 2



A common and widespread breeder, mapped decline in American Robins between the two atlases may be the result of different methods, though some have noted a reduction in local abundance even as the species remains widespread. Nests are found in suburbs, woodlands, orchards, riparian forests—anywhere with adequate moisture and trees or structures to place nests. Drought-tolerant plantings and reduced watering may discourage robin nesting.

Breeding Bird Survey Trend (1966–2019)

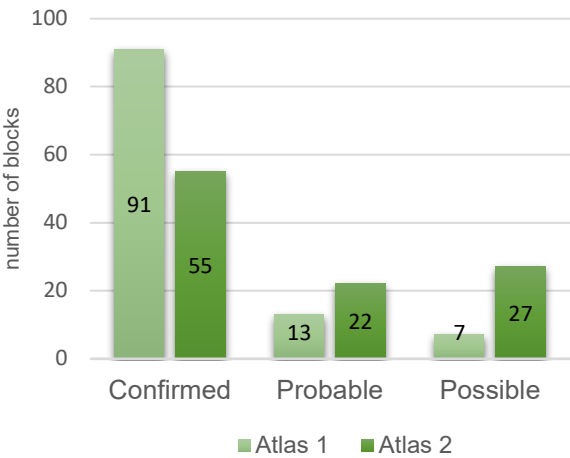
California	Rangewide ¹
-0.55% / year ^s	0.13% / year ^s

¹North America; ^ssignificant; Source: Sauer et al. 2020

Breeding Habitat

Wide variety, but not dry areas

Comparison of Atlas Results



Nest Type

Cup of grass and twigs worked into mud

17 June 2015

Block H-8

Took numerous trips with several strands from thyme ground cover. Also, flew off with a long strand of gazania trailing behind. Returned to bath to rinse mud off of bill.