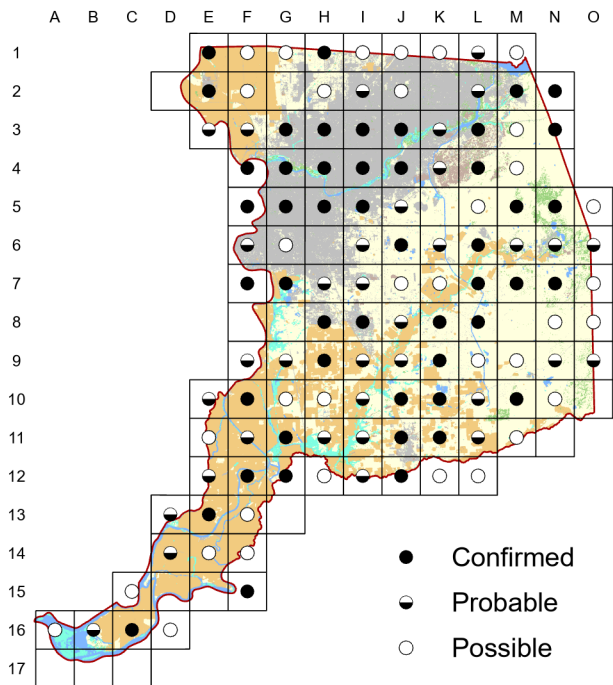
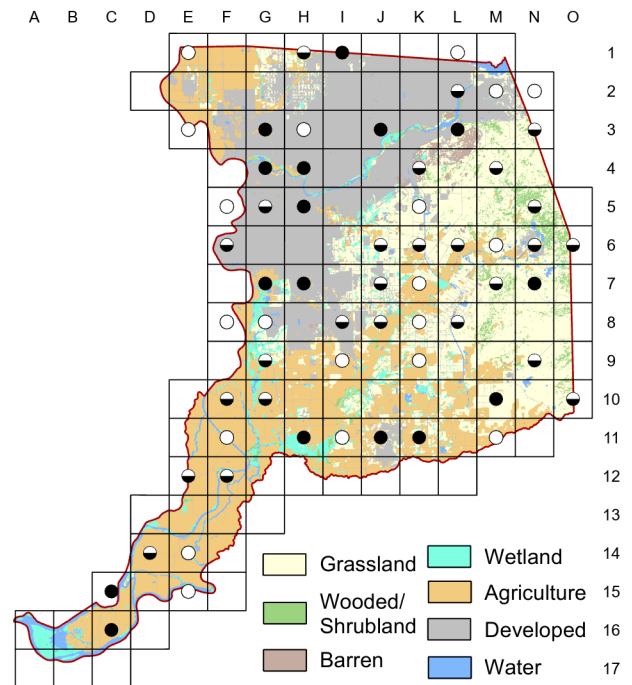


# American Kestrel *Falco sparverius*

**Atlas 1**



**Atlas 2**



The long-term, widespread decline of the American Kestrel throughout its range has been well documented. Loss of open-country habitat and lack of nest cavities are certainly factors. A comparison of the two atlas maps demonstrates the disappearance of breeding kestrels from areas where development has converted or fragmented areas of previously open habitats.

## Breeding Bird Survey Trend (1966–2019)

California  
–1.88% / year<sup>s</sup>

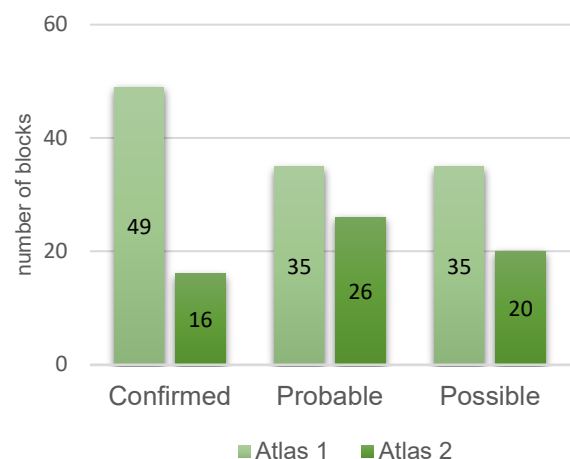
Rangewide<sup>1</sup>  
–1.41% / year<sup>s</sup>

<sup>1</sup>North America; <sup>s</sup>significant; Source: Sauer et al. 2020

## Breeding Habitat

Variety of open to semi-open country

## Comparison of Atlas Results



## Nest Type

Cavity

28 March 2017

Block J-11

Male guarding possible nest and feeding female. Male chased off a Nuttall's Woodpecker from a snag with a possible nest hole.