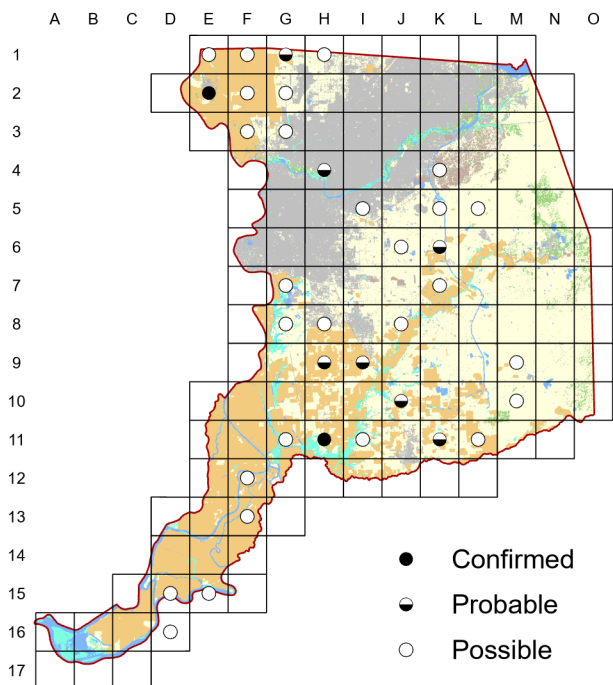
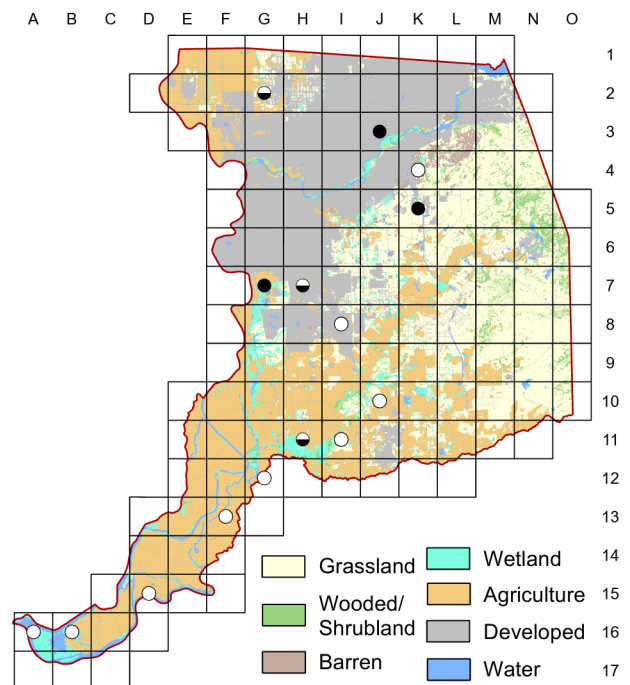


American Bittern *Botaurus lentiginosus*

Atlas 1



Atlas 2



As with many other waterbird species, the reduction in detections of American Bitterns between the two atlases almost certainly reflects a real decline over the past two decades. Most notable is the loss of habitat (largely ricelands) in the northwestern part of the county (Natomas Basin), as well as reduced summer water, discussed in Chapters Four and Six.

Breeding Bird Survey Trend (1966–2019)

California
–0.02% / yearⁿ

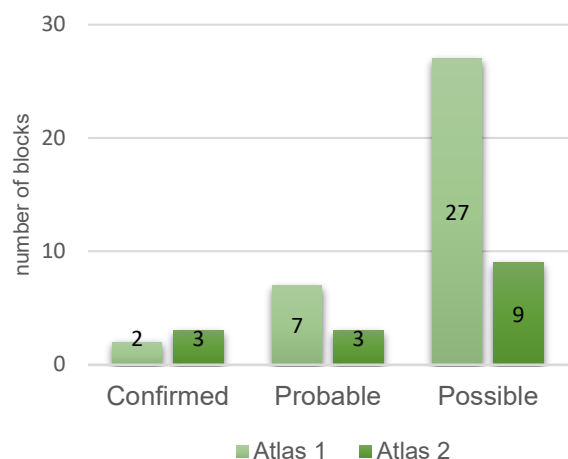
Rangewide¹
–0.74% / yearⁿ

¹North America; ⁿnonsignificant; Source: Sauer et al. 2020

Breeding Habitat

Wetland with tall emergent vegetation

Comparison of Atlas Results



Nest Type

Platform of vegetation, usually over water

6 May 2016

Block K-5

Courting pair was very active, flying circles over the lake at times.